

# Anti-KEL antibody



Catalog Number: 142970

## Product name

Anti-KEL antibody

## Specificity

Human KEL

## Antibody description

Rabbit Polyclonal to Human KEL

## Preparation

Produced in rabbits immunized with a synthetic peptide corresponding to the C-terminus of the Human KEL, and purified by antigen affinity chromatography.

## Formulation

0.2  $\mu$ m filtered solution in PBS

## Storage

This antibody can be stored at 2°C-8°C for one month without detectable loss of activity. Antibody products are stable for twelve months from date of receipt when stored at -20°C to -80°C.

Preservative-Free.

Sodium azide is recommended to avoid contamination (final concentration 0.05%-0.1%). It is toxic to cells and should be disposed of

properly. Avoid repeated freeze-thaw cycles.

## Clonality

Polyclonal

## Ig Type

Rabbit IgG

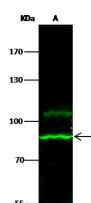
## Applications

WB

## Dilutions

WB: 5-20  $\mu$ g/ml

## Validations



| Lanes                                   | A   |
|---|---|
| Sample (whole cell lysate)              | K562  |
| Sample Volume (μg/lane)                 | 30  |
| Gel                                     | 7.5% SDS-PAGE reducing gel  |
| Recommended Concentration               | 5-20 μg/ml  |
| Secondary Antibody                      | Dylight 800-labeled Antibody to Rabbit IgG (1:1), at 1:5000 dilution.   |
| Developed using Odyssey imaging system. |   |
| Explanation                             | Predicted band size : 83 kDa<br>Observed band size : 83 kDa<br>Additional bands at : 108 (We are unsure as to the identity of these extra bands.) |

KEL Antibody, Rabbit PAb, Antigen Affinity Purified, Western blot