

Anti-GDF3 antibody



Catalog Number: 142968

Product name

Anti-GDF3 antibody

Specificity

Human GDF-3

Antibody description

Rabbit Polyclonal to Human GDF3

Preparation

Produced in rabbits immunized with a synthetic peptide corresponding to the center region of the Human GDF-3, and purified by antigen affinity chromatography.

Formulation

0.2 μ m filtered solution in PBS

Storage

This antibody can be stored at 2°C-8°C for one month without detectable loss of activity. Antibody products are stable for twelve months from date of receipt when stored at -20°C to -80°C.

Preservative-Free.

Sodium azide is recommended to avoid contamination (final concentration 0.05%-0.1%). It is toxic to cells and should be disposed of properly. Avoid repeated freeze-thaw cycles.

Clonality

Polyclonal

Ig Type

Rabbit IgG

Applications

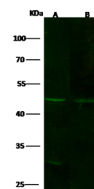
WB, ICC/IF, IF

Dilutions

WB: 5-20 μ g/ml

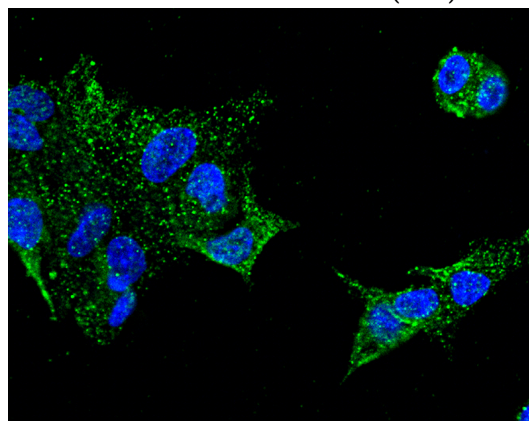
ICC/IF: 0.5-3 μ g/mL

Validations



Lanes		
Items	A	B
Sample (whole cell lysate)	HepG2	SH-SY5Y
Sample Volume (μg/lane)	30	30
Gel	13% SDS-PAGE reducing gel	
Recommended Concentration	10 μg/ml	
Secondary Antibody	Dylight 800-labeled Antibody to Rabbit IgG (H+L), at 1:5000 dilution.	
Developed using Odyssey imaging system.		
Explanation	Predicted band size : 41 kDa	
	Observed band size : 46 kDa	
	Additional bands at : 30 kDa [We are unsure as to the identity of these extra bands.]	

Human GDF-3 Western blot (WB) 15577



Human GDF-3 Immunofluorescence(IF) 15578