

# Anti-CGREF1 antibody



Catalog Number: 142964

## Product name

Anti-CGREF1 antibody

## Immunogen

[Human CGREF1 \(His Tag\) recombinant protein](#)

## Specificity

Human CGREF1

## Antibody description

Rabbit Polyclonal to Human CGREF1

## Preparation

Produced in rabbits immunized with purified, recombinant Human CGREF1. CGREF1 specific IgG was purified by Human CGREF1 affinity chromatography.

## Formulation

0.2 µm filtered solution in PBS

## Storage

This antibody can be stored at 2°C-8°C for one month without detectable loss of activity. Antibody products are stable for twelve months from date of receipt when stored at -20°C to -80°C.

Preservative-Free.

Sodium azide is recommended to avoid contamination (final concentration 0.05%-0.1%). It is toxic to cells and should be disposed of properly. Avoid repeated freeze-thaw cycles.

## Clonality

Polyclonal

## Ig Type

Rabbit IgG

## Applications

WB, ELISA

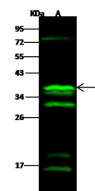
## Dilutions

WB: 5-20 µg/ml

ELISA: 0.1-0.2 µg/ml

This antibody can be used at 0.1-0.2 µg/ml with the appropriate secondary reagents to detect Human CGREF1.

## Validations



Items	Lanes	A
Sample (whole cell lysate)		HL60
Sample Volume (µg/lane)		30
Gel		13% SDS-PAGE reducing gel
Recommended Concentration		5-20 µg/ml
Secondary Antibody		Dylight 800 labeled Antibody to Rabbit IgG (1:1), at 1:5000 dilution.
Explanation		Developed using Odyssey imaging system. Predicted band size : 32 kDa Observed band size : 32 kDa Additional bands at : 16 kDa, 19 kDa, 31 kDa and 76 kDa (We are unsure as to the identity of these extra bands.)

CGREF1 Antibody, Rabbit PAb, Antigen Affinity Purified, Western blot