

Product name

Anti-RXRG antibody

Specificity

Human RXRG

Antibody description

Rabbit Polyclonal to Human RXRG

Preparation

Produced in rabbits immunized with a synthetic peptide corresponding to the center region of the Human RXRG, and purified by antigen affinity chromatography.

Formulation

0.2 µm filtered solution in PBS

Storage

This antibody can be stored at 2°C-8°C for one month without detectable loss of activity. Antibody products are stable for twelve months from date of receipt when stored at -20°C to -80°C.

Preservative-Free.

Sodium azide is recommended to avoid contamination (final concentration 0.05%-0.1%). It is toxic to cells and should be disposed of

properly. Avoid repeated freeze-thaw cycles.

Clonality

Polyclonal

Ig Type

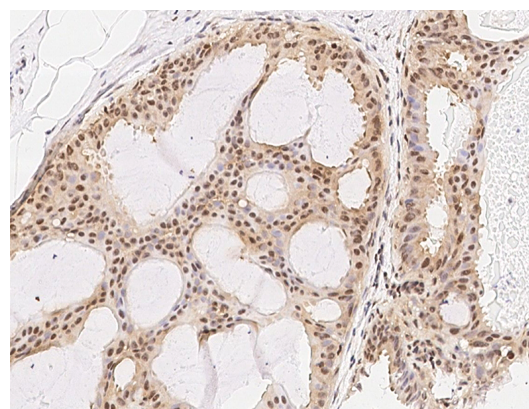
Rabbit IgG

Applications

IHC-P

Dilutions

IHC-P: 0.1-2 µg/mL

Validations

RXRG Antibody, Rabbit PAb, Antigen Affinity Purified, Immunohistochemistry