

# Anti-ATPIF1 antibody



Catalog Number: 142958

## Product name

Anti-ATPIF1 antibody

IHC-P: 0.1-2 µg/mL

IP: 1-4 µl/mg of lysate

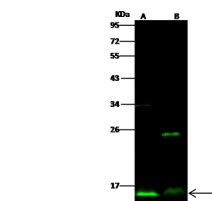
## Specificity

Human ATPase Inhibitory Factor 1

## Validations

## Antibody description

Rabbit Polyclonal to Human ATPIF1



## Preparation

Produced in rabbits immunized with a synthetic peptide corresponding to the C-terminus of the Human ATPase Inhibitory Factor 1, and purified by antigen affinity chromatography.

Lanes	A	B
Items		
Sample (whole cell lysate)	Jurkat	A431
Sample Volume (µg/lane)	30	30
Gel	13% SDS-PAGE reducing gel	
Recommended Concentration	5-20 µg/ml	
Secondary Antibody	Dylight 800-labeled Antibody to Rabbit IgG (H+L), at 1:5000 dilution.	
Explanation	Developed using Odyssey imaging system. Predicted band size : 12 kDa Observed band size : 15 kDa Additional bands at : 25 kDa and 33 kDa (We are unsure as to the identity of these extra bands.)	

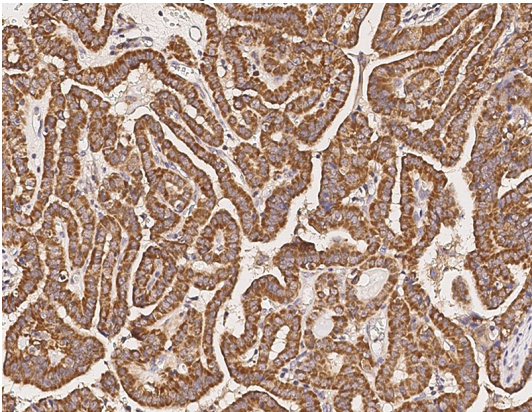
## Formulation

0.2 µm filtered solution in PBS

ATPase Inhibitory Factor 1 Antibody, Rabbit PAb, Antigen Affinity Purified, Western blot

## Storage

This antibody can be stored at 2°C-8°C for one month without detectable loss of activity. Antibody products are stable for twelve months from date of receipt when stored at -20°C to -80°C. Preservative-Free. Sodium azide is recommended to avoid contamination (final concentration 0.05%-0.1%). It is toxic to cells and should be disposed of properly. Avoid repeated freeze-thaw cycles.



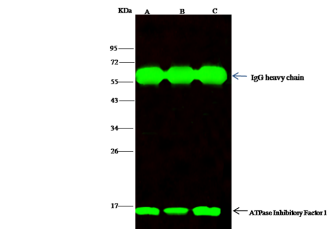
## Clonality

Polyclonal

ATPase Inhibitory Factor 1 Antibody, Rabbit PAb, Antigen Affinity Purified, Immunohistochemistry

## Ig Type

Rabbit IgG



## Applications

WB, IHC-P, IP

Lanes	A	B	C
Items			
Sample (whole cell lysate)	Jurkat	A431	293T
Sample quantity	0.5 mg		
IP antibody quantity	4 µL		
Protein G agarose	15 µl of 50% Protein G Agarose		
Gel	13% SDS-PAGE reducing gel		
Primary antibody	KLJ1-6MCC-SINOA2-688+KLJ1-6MCC-SINOA2815 antibody at 10 µg/ml		
Secondary antibody	Dylight 800-labeled antibody to rabbit IgG (H+L), at 1:5000 dilution		

## Dilutions

WB: 5-20 µg/ml

ATPase Inhibitory Factor 1 Antibody, Rabbit PAb, Antigen Affinity Purified, Immunoprecipitation