

Anti-NAPA antibody



Catalog Number: 142944

Product name

Anti-NAPA antibody

Immunogen

[Human SNAP-alpha \(His Tag\) recombinant protein](#)

Specificity

Human SNAP-alpha

Antibody description

Rabbit Polyclonal to Human NAPA

Preparation

Produced in rabbits immunized with purified, recombinant Human SNAP-alpha . SNAP-alpha specific IgG was purified by Human SNAP-alpha affinity chromatography.

Formulation

0.2 μ m filtered solution in PBS

Storage

This antibody can be stored at 2°C-8°C for one month without detectable loss of activity. Antibody products are stable for twelve months from date of receipt when stored at -20°C to -80°C.

Preservative-Free.

Sodium azide is recommended to avoid contamination (final concentration 0.05%-0.1%). It is toxic to cells and should be disposed of properly. Avoid repeated freeze-thaw cycles.

Clonality

Polyclonal

Ig Type

Rabbit IgG

Applications

WB, ELISA, ICC/IF, IF, IP

Dilutions

WB: 5-20 μ g/ml

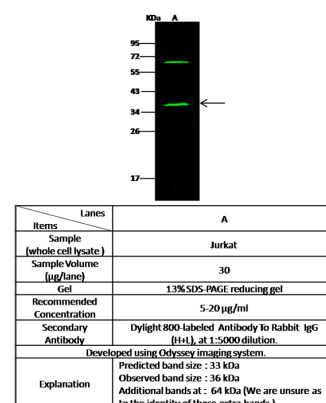
ELISA: 0.1-0.2 μ g/mL

This antibody can be used at 0.1-0.2 μ g/mL with the appropriate secondary reagents to detect Human SNAP-alpha.

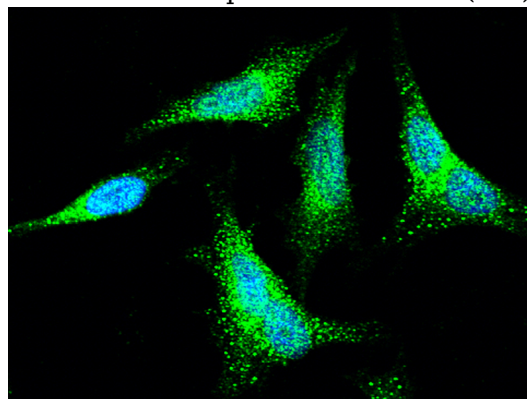
ICC/IF: 0.5-3 μ g/mL

IP: 0.5-2 uL/mg of lysate

Validations

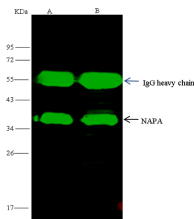


Human SNAP-alpha Western blot (WB) 15723



Human SNAP-alpha Immunofluorescence(IF)

Catalog Number: 142944



Human SNAP-alpha Immunoprecipitation(IP)
15725

Items	A	B
Sample (whole cell lysate)	HeLa	HepG2
Sample quantity	0.5 mg	
IP antibody quantity	4 uL	
Protein G agarose	15 µl of 50% Protein G Agarose	
Gel	13% SDS-PAGE reducing gel	
Primary antibody	His-NAPA antibody at 10 µg/ml	
Secondary antibody	Dylight 800-labeled antibody to rabbit IgG (H+L), at 1:5000 dilution	

15724