

# Anti-WNV-prM and E antibody



Catalog Number: 142941

## Product name

Anti-WNV-prM and E antibody

## Immunogen

[WNV WNV-prM and E / prM protein and Envelope \(Domain III, His Tag\)](#)

## Specificity

West Nile Virus (WNV) (lineage 1, strain NY99) E / Envelope

## Antibody description

Rabbit Polyclonal to WNV WNV-prM and E

## Preparation

Produced in rabbits immunized with purified, recombinant West Nile Virus (WNV) (lineage 1, strain NY99) E / Envelope . West Nile Virus (WNV) (lineage 1, strain NY99) E / Envelope specific IgG was purified by West Nile Virus (WNV) (lineage 1, strain NY99) E / Envelope affinity chromatography.

## Formulation

0.2 µm filtered solution in PBS

## Storage

This antibody can be stored at 2°C-8°C for one month without detectable loss of activity. Antibody products are stable for twelve months from date of receipt when stored at -20°C to -80°C.

Preservative-Free.

Sodium azide is recommended to avoid contamination (final concentration 0.05%-0.1%). It is toxic to cells and should be disposed of properly. Avoid repeated freeze-thaw cycles.

## Clonality

Polyclonal

## Ig Type

Rabbit IgG

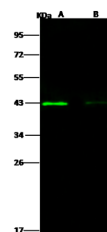
## Applications

WB, ICC/IF, IF, IP

## Dilutions

WB: 0.5-5 µg/ml

## Validations



Items	Lanes	A	B
Sample (Recombinant protein)		WNV-EDIII(296-415)h-40345Y2 (Cat#40345-V08Y1)	
Sample Volume (ng/lane)		50	10
Gel		13% SDS-PAGE reducing gel	
Recommended Concentration		0.5-5µg/ml	
Secondary Antibody		Dylight 800 labeled Antibody to Rabbit IgG (1:1), at 1:5000 dilution.	
Developed using Odyssey imaging system.			

West Nile Virus (WNV) (lineage 1, strain NY99) E / Envelope Antibody, Rabbit PAb, Antigen Affinity Purified, Western blot