

Anti-LAP3 antibody



Catalog Number: 142937

Product name

Anti-LAP3 antibody

Immunogen

[Human LAP3 \(His Tag\) recombinant protein](#)

Specificity

Human LAP3

Antibody description

Rabbit Polyclonal to Human LAP3

Preparation

Produced in rabbits immunized with purified, recombinant Human LAP3. LAP3 specific IgG was purified by Human LAP3 affinity chromatography.

Formulation

0.2 µm filtered solution in PBS

Storage

This antibody can be stored at 2°C-8°C for one month without detectable loss of activity. Antibody products are stable for twelve months from date of receipt when stored at -20°C to -80°C.

Preservative-Free.

Sodium azide is recommended to avoid contamination (final concentration 0.05%-0.1%). It is toxic to cells and should be disposed of properly. Avoid repeated freeze-thaw cycles.

Clonality

Polyclonal

Ig Type

Rabbit IgG

Applications

WB, ELISA, IHC-P, ICC/IF, IF, IP

Dilutions

WB: 5-20 µg/ml

ELISA: 0.1-0.2 µg/mL

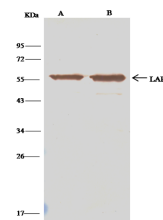
This antibody can be used at 0.1-0.2 µg/mL with the appropriate secondary reagents to detect Human LAP3.

IHC-P: 0.01-1µg/mL

ICC/IF: 0.5-3µg/mL

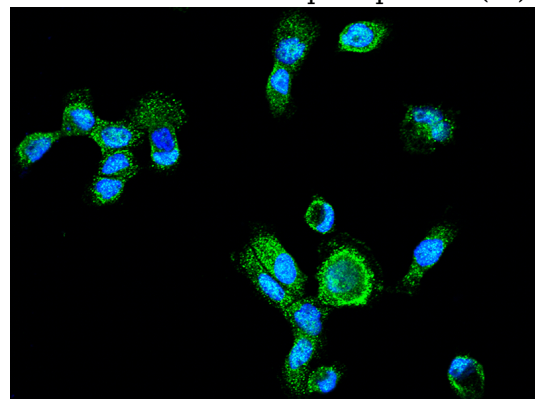
IP: 1-4 µl/mg of lysate

Validations



Items	Lanes	A	B
Sample (wholecell lysate)		HeLa	HepG2
Sample quantity		0.5 mg	
IP antibody quantity		4µL	
Protein G agarose		15 µl of 50% Protein G Agarose	
Gel		13% SDS-PAGE reducing gel	
Primary antibody		LAP3-His(C) antibody at 10 µg/ml	
Secondary antibody		Clean-Block IP Detection Reagent (HRP) at 1:500 dilution	

Human LAP3 Immunoprecipitation(IP) 15851

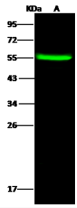


Human LAP3 Immunofluorescence(IF) 15850

Anti-LAP3 antibody

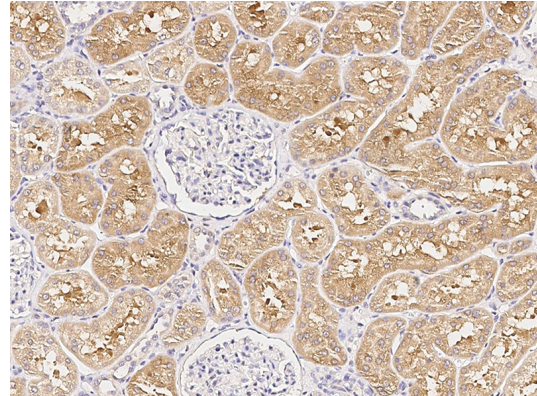


Catalog Number: 142937

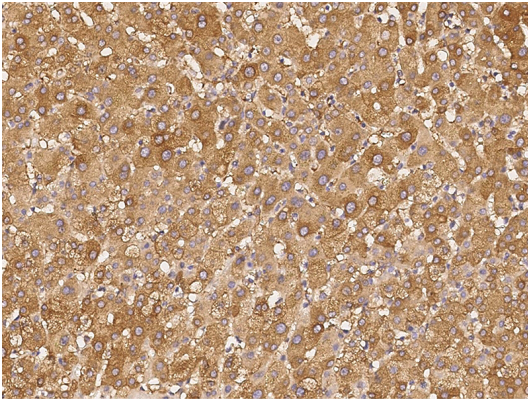


Lanes	A
Items	
Sample (whole cell lysate)	HepG2
Sample Volume (µg/lane)	30
Gel	13% SDS-PAGE reducing gel
Recommended Concentration	5-20 µg/ml
Secondary Antibody	Dylight 800-labeled Antibody to Rabbit IgG (1:1), at 1:5000 dilution.
Explanation	Developed using Odyssey imaging system. Predicted band size : 56 kDa Observed band size : 55 kDa

Human LAP3 Immunohistochemistry(IHC) 15848



Human LAP3 Western blot (WB) 15847



Human LAP3 Immunohistochemistry(IHC) 15849