

Anti-SCML2 antibody



Catalog Number: 142929

Product name

Anti-SCML2 antibody

Specificity

Human SCML2

Antibody description

Rabbit Polyclonal to Human SCML2

Preparation

Produced in rabbits immunized with a synthetic peptide corresponding to the N-terminus of the Human SCML2, and purified by antigen affinity chromatography.

Formulation

0.2 μ m filtered solution in PBS

Storage

This antibody can be stored at 2°C-8°C for one month without detectable loss of activity. Antibody products are stable for twelve months from date of receipt when stored at -20°C to -80°C.

Preservative-Free.

Sodium azide is recommended to avoid contamination (final concentration 0.05%-0.1%). It is toxic to cells and should be disposed of

properly. Avoid repeated freeze-thaw cycles.

Clonality

Polyclonal

Ig Type

Rabbit IgG

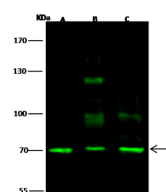
Applications

WB

Dilutions

WB: 5-20 μ g/ml

Validations



Lanes	A	B	C
Items			
Sample (whole cell lysate)	HeLa	293T	Jurkat
Sample Volume (μ g/lane)	30	30	30
Gel	7.5% SDS-PAGE reducing gel		
Recommended Concentration	5-20 μ g/ml		
Secondary Antibody	Dylight 800 labeled Antibody to Rabbit IgG (H+L), at 1:5000 dilution.		
Developed using Odyssey imaging system.			
Explanation	Predicted band size : 77 kDa Observed band size : 70 kDa Additional bands at : 125 kDa and 95 kDa (We are unsure as to the identity of these extra bands.)		

SCML2 Antibody, Rabbit PAb, Antigen Affinity Purified, Western blot