

# Anti-ROPN1L antibody



Catalog Number: 142926

---

**Product name**

Anti-ROPN1L antibody

**Specificity**

Human ROPN1L

**Antibody description**

Rabbit Polyclonal to Human ROPN1L

**Preparation**

Produced in rabbits immunized with a synthetic peptide corresponding to the C-terminus of the Human ROPN1L, and purified by antigen affinity chromatography.

**Formulation**

0.2 µm filtered solution in PBS

**Storage**

This antibody can be stored at 2°C-8°C for one month without detectable loss of activity. Antibody products are stable for twelve months from date of receipt when stored at -20°C to -80°C.

Preservative-Free.

Sodium azide is recommended to avoid contamination (final concentration 0.05%-0.1%). It is toxic to cells and should be disposed of

properly. Avoid repeated freeze-thaw cycles.

**Clonality**

Polyclonal

**Ig Type**

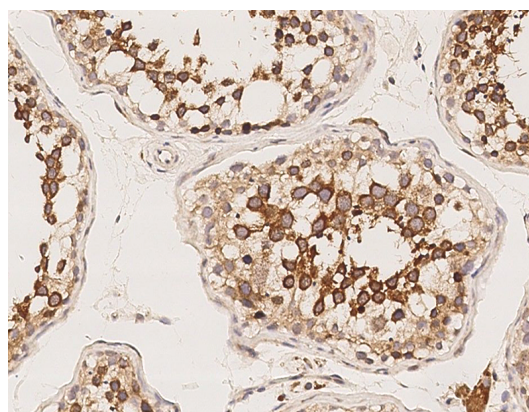
Rabbit IgG

**Applications**

IHC-P

**Dilutions**

IHC-P: 0.1-2 µg/mL

**Validations**

ROPN1L Antibody, Rabbit PAb, Antigen Affinity Purified, Immunohistochemistry