

Anti-MAPK13 antibody



Catalog Number: 142900

Product name

Anti-MAPK13 antibody

Immunogen

[Human p38 delta/MAPK13 \(GST Tag\) recombinant protein](#)

Specificity

Human p38 delta / MAPK13

Antibody description

Rabbit Polyclonal to Human MAPK13

Preparation

Produced in rabbits immunized with purified, recombinant Human p38 delta / MAPK13 . p38 delta / MAPK13 specific IgG was purified by Human p38 delta / MAPK13 affinity chromatography.

Formulation

0.2 µm filtered solution in PBS

Storage

This antibody can be stored at 2°C-8°C for one month without detectable loss of activity. Antibody products are stable for twelve months from date of receipt when stored at -20°C to -80°C. Preservative-Free.

Sodium azide is recommended to avoid contamination (final concentration 0.05%-0.1%). It is toxic to cells and should be disposed of properly. Avoid repeated freeze-thaw cycles.

Clonality

Polyclonal

Ig Type

Rabbit IgG

Applications

WB, ELISA, IP

Dilutions

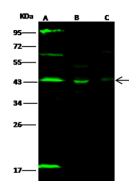
WB: 5-20 µg/ml

ELISA: 0.1-0.2 µg/ml

This antibody can be used at 0.1-0.2 µg/ml with the appropriate secondary reagents to detect Human p38 delta / MAPK13.

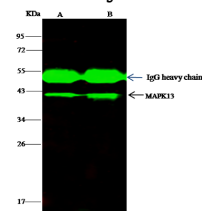
IP: 4-8 µl/mg of lysate

Validations



Lanes	A	B	C
Items			
Sample (whole cell lysate)	293	MCF7	HepG2
Sample Volume (µg/lane)	30	30	30
Gel	13% SDS-PAGE reducing gel		
Recommended Concentration	5-20 µg/ml		
Secondary Antibody	Dylight 800 labeled Antibody to Rabbit IgG (H+L), at 1:5000 dilution		
Explanation	Developed using Odyssey imaging system. Predicted band size : 42 kDa Observed band size : 44 kDa Additional bands at : 18 kDa, 61 kDa and 95 kDa (We are unsure as to the identity of these extra bands.)		

p38 delta / MAPK13 Antibody, Rabbit PAb, Antigen Affinity Purified, Western blot



Lanes	A	B
Items		
Sample (whole cell lysate)	MCF-7	HepG2
Sample quantity	0.5 mg	
IP antibody quantity	4 µL	
Protein G agarose	1.5 µl of 50% Protein G Agarose	
Gel	13% SDS-PAGE reducing gel	
Primary antibody	GST-MAPK13 antibody at 10 µg/ml	
Secondary antibody	Dylight 800-labeled antibody to rabbit IgG (H+L), at 1:5000 dilution	

p38 delta / MAPK13 Antibody, Rabbit PAb, Antigen Affinity Purified, Immunoprecipitation