

Anti-KRAS antibody



Catalog Number: 142888

Product name

Anti-KRAS antibody

Specificity

Human K-Ras

Antibody description

Rabbit Polyclonal to Human KRAS

Preparation

Produced in rabbits immunized with a synthetic peptide corresponding to the center region of the Human K-Ras, and purified by antigen affinity chromatography.

Formulation

0.2 μ m filtered solution in PBS

Storage

This antibody can be stored at 2°C-8°C for one month without detectable loss of activity. Antibody products are stable for twelve months from date of receipt when stored at -20°C to -80°C.

Preservative-Free.

Sodium azide is recommended to avoid contamination (final concentration 0.05%-0.1%). It is toxic to cells and should be disposed of

properly. Avoid repeated freeze-thaw cycles.

Clonality

Polyclonal

Ig Type

Rabbit IgG

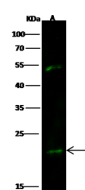
Applications

WB

Dilutions

WB: 5-20 μ g/ml

Validations



Lanes	A
Items	
Sample	Mouse lung tissue lysate
Sample Volume (μ g/lane)	30
Gel	13% SDS-PAGE reducing gel
Recommended Concentration	5-20 μ g/ml
Secondary Antibody	Dylight 800-labeled Antibody to Rabbit IgG (1:1), at 1:5000 dilution.
Developed using Odyssey imaging system.	
Explanation	Predicted band size : 22 kDa Observed band size : 22 kDa Additional bands at : 54 kDa (We are unsure as to the identity of these extra bands.)

K-Ras Antibody, Rabbit PAb, Antigen Affinity Purified, Western blot