

Anti-MAP2K1 antibody



Catalog Number: 142845

Product name

Anti-MAP2K1 antibody

Immunogen

[Mouse MEK1/MAP2K1/MKK1 \(His & GST Tag\) recombinant protein](#)

Specificity

Mouse MEK1/MAP2K1/MKK1

Antibody description

Rabbit Polyclonal to Mouse MAP2K1

Preparation

Produced in rabbits immunized with purified, recombinant Mouse MEK1/MAP2K1/MKK1 . MEK1/MAP2K1/MKK1 specific IgG was purified by Mouse MEK1/MAP2K1/MKK1 affinity chromatography.

Formulation

0.2 µm filtered solution in PBS

Storage

This antibody can be stored at 2°C-8°C for one month without detectable loss of activity. Antibody products are stable for twelve months from date of receipt when stored at -20°C to -80°C.

Preservative-Free.

Sodium azide is recommended to avoid contamination (final concentration 0.05%-0.1%). It is toxic to cells and should be disposed of properly. Avoid repeated freeze-thaw cycles.

Clonality

Polyclonal

Ig Type

Rabbit IgG

Applications

WB, ELISA, IHC-P, ICC/IF, IF, IP

Dilutions

WB: 5-20 µg/ml

ELISA: 0.1-0.2 µg/mL

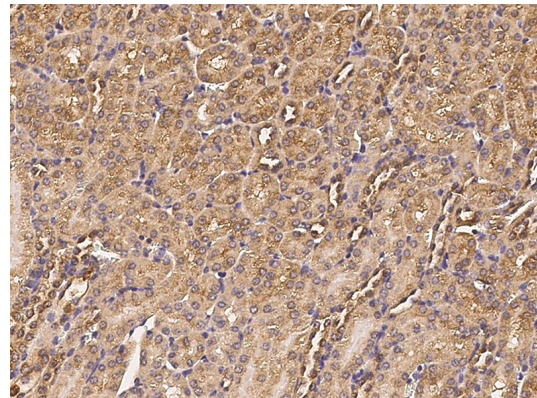
This antibody can be used at 0.1-0.2 µg/mL with the appropriate secondary reagents to detect Mouse MEK1/MAP2K1/MKK1.

IHC-P: 0.1-2µg/mL

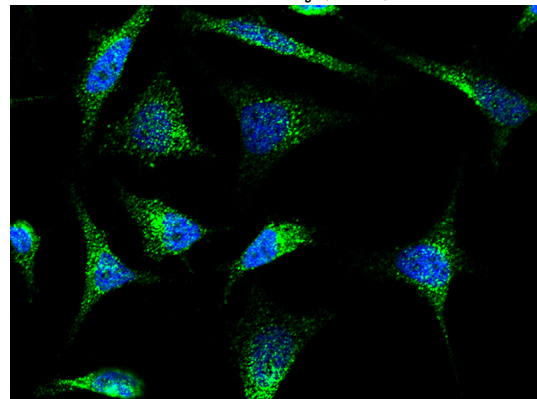
ICC/IF: 0.5-3µg/mL

IP: 4-8 uL/mg of lysate

Validations



Mouse MEK1/MAP2K1/MKK1 Immunohistochemistry(IHC) 15751

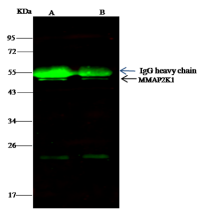


Mouse MEK1/MAP2K1/MKK1 Immunofluorescence(IF) 15752

Anti-MAP2K1 antibody

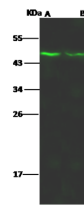


Catalog Number: 142845



Lanes	A	B
Items		
Sample (whole cell lysate)	Jurkat	Hela
Sample quantity	0.5 mg	
IP antibody quantity	4 μ l	
Protein G agarose	15 μ l of 50% Protein G Agarose	
Gel	13% SDS-PAGE reducing gel	
Primary antibody	HE3C-3MAP2K1 antibody at 10 μ g/ml	
Secondary antibody	Dylight 800-labeled antibody to rabbit IgG (H+L), at 1:5000 dilution	

Mouse MEK1/MAP2K1/MKK1
Immunoprecipitation(IP) 15753



Lanes	A	B
Items		
Sample (whole cell lysate)	Jurkat	Hela
Sample Volume (μ g/lane)	30	30
Gel	13% SDS-PAGE reducing gel	
Recommended Concentration	5-20 μ g/ml	
Secondary Antibody	Dylight 800 labeled Antibody to Rabbit IgG (H+L), at 1:5000 dilution	
Developed using Odyssey imaging system.		
Explanation	Predicted band size : 43 kDa Observed band size : 46 kDa	

Mouse MEK1/MAP2K1/MKK1 Western blot (WB)
15750