

# Anti-KIR3DL1 antibody



Catalog Number: 142833

## Product name

Anti-KIR3DL1 antibody

## Specificity

Human KIR3DL1

## Antibody description

Rabbit Polyclonal to Human KIR3DL1

## Preparation

Produced in rabbits immunized with a synthetic peptide corresponding to the C-terminus of the Human KIR3DL1. The IgG fraction of the cell culture supernatant was purified by Protein A affinity chromatography.

## Formulation

0.2 µm filtered solution in PBS

## Storage

This antibody can be stored at 2°C-8°C for one month without detectable loss of activity. Antibody products are stable for twelve months from date of receipt when stored at -20°C to -80°C.

Preservative-Free.

Sodium azide is recommended to avoid contamination (final concentration 0.05%-0.1%). It

is toxic to cells and should be disposed of properly. Avoid repeated freeze-thaw cycles.

## Clonality

Polyclonal

## Ig Type

Rabbit IgG

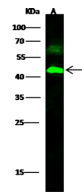
## Applications

WB

## Dilutions

WB: 0.5-5 µg/ml

## Validations



Items	Lanes	A
Sample (whole cell lysate)		293T
Sample Volume (µg/lane)		30
Gel		13% SDS-PAGE, reducing gel
Recommended Concentration		10 µg/ml
Secondary Antibody		Dylight 800 labeled Antibody to Rabbit IgG (H+L), at 1:5000 dilution.
Explanation		Developed using Odyssey imaging system. Predicted band size : 49 kDa Observed band size : 45 kDa Additional bands at : 62 kDa [We are unsure as to the identity of these extra bands.]

KIR3DL1 Antibody, Rabbit PAb, Western blot