

Anti-FLOT2 antibody

Catalog Number: 142824

Product name

Anti-FLOT2 antibody

Specificity

Human FLOT2

Antibody description

Rabbit Polyclonal to Human FLOT2

Preparation

Produced in rabbits immunized with a synthetic peptide corresponding to the C-terminus of the Human FLOT2, and purified by antigen affinity chromatography.

Formulation

0.2 µm filtered solution in PBS

Storage

This antibody can be stored at 2°C-8°C for one month without detectable loss of activity. Antibody products are stable for twelve months from date of receipt when stored at -20°C to -80°C.

Preservative-Free.

Sodium azide is recommended to avoid contamination (final concentration 0.05%-0.1%). It is toxic to cells and should be disposed of properly. Avoid repeated freeze-thaw cycles.

Clonality

Polyclonal

Ig Type

Rabbit IgG

Applications

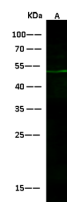
WB, ICC/IF, IF

Dilutions

WB: 10-30 µg/ml

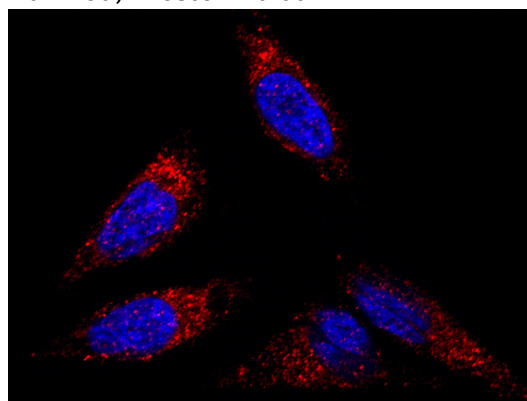
ICC/IF: 0.5-3 µg/mL

Validations



Items	Lanes
Sample (whole cell lysate)	A
Sample Volume (µg/lane)	293T
Cell	30
Recommended Concentration	13% SDS-PAGE reducing gel
Secondary Antibody	10-30µg/ml
Explanation	Dylight 800-labeled Antibody To Rabbit IgG (H+L), at 1:5000 dilution.
	Developed using Odyssey imaging system.
	Predicted band size : 47 kDa
	Observed band size : 50 kDa

FLOT2 Antibody, Rabbit PAb, Antigen Affinity Purified, Western blot



FLOT2 Antibody, Rabbit PAb, Antigen Affinity Purified, Immunofluorescence