

Product name

Anti-NAPSA antibody

Specificity

Human NAPSA/Napsin A

Antibody description

Rabbit Polyclonal to Human NAPSA

Preparation

Produced in rabbits immunized with a synthetic peptide corresponding to the N-terminus of the Human NAPSA/Napsin A, and purified by antigen affinity chromatography.

Formulation

0.2 µm filtered solution in PBS

Storage

This antibody can be stored at 2°C-8°C for one month without detectable loss of activity. Antibody products are stable for twelve months from date of receipt when stored at -20°C to -80°C.

Preservative-Free.

Sodium azide is recommended to avoid contamination (final concentration 0.05%-0.1%). It is toxic to cells and should be disposed of

properly. Avoid repeated freeze-thaw cycles.

Clonality

Polyclonal

Ig Type

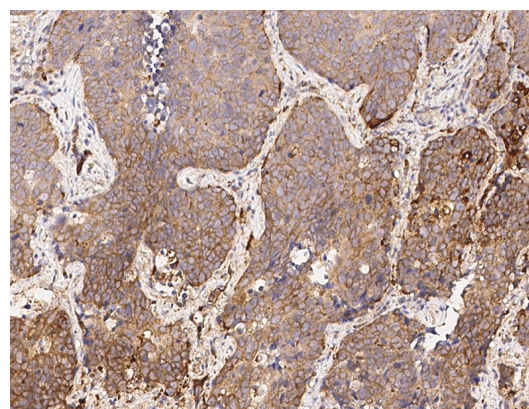
Rabbit IgG

Applications

IHC-P

Dilutions

IHC-P: 0.1-2µg/mL

Validations

Human NAPSA/Napsin A
Immunohistochemistry(IHC) 15640