

# Anti-KRT17 antibody



Catalog Number: 142789

## Product name

Anti-KRT17 antibody

## Specificity

Human KRT17/Cytokeratin17

## Antibody description

Rabbit Polyclonal to Human KRT17

## Preparation

Produced in rabbits immunized with a synthetic peptide corresponding to the C-terminus of the Human KRT17/Cytokeratin17, and purified by antigen affinity chromatography.

## Formulation

0.2 µm filtered solution in PBS

## Storage

This antibody can be stored at 2°C-8°C for one month without detectable loss of activity. Antibody products are stable for twelve months from date of receipt when stored at -20°C to -80°C. Preservative-Free. Sodium azide is recommended to avoid contamination (final concentration 0.05%-0.1%). It is toxic to cells and should be disposed of properly. Avoid repeated freeze-thaw cycles.

## Clonality

Polyclonal

## Ig Type

Rabbit IgG

## Applications

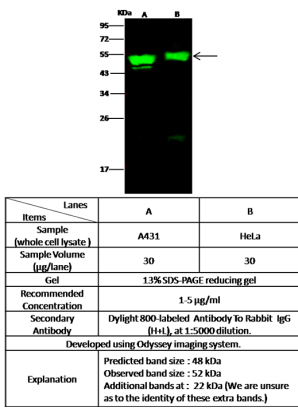
WB, ICC/IF, IF

## Dilutions

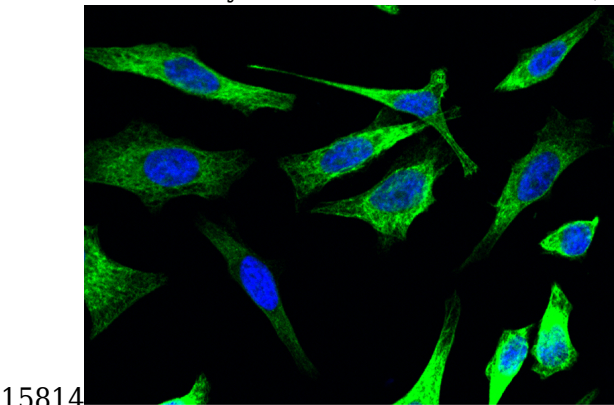
WB: 1-5 µg/ml

ICC/IF: 0.5-3µg/mL

## Validations



## Human KRT17/Cytokeratin17 Western blot (WB)



Human KRT17/Cytokeratin17  
Immunofluorescence(IF) 15815