

# Anti-ABL1 antibody



Catalog Number: 142751

## Product name

Anti-ABL1 antibody

## Immunogen

[Human c-Abl / ABL1 \(GST Tag\) recombinant protein](#)

## Specificity

Human c-Abl / ABL1

## Antibody description

Rabbit Polyclonal to Human ABL1

## Preparation

Produced in rabbits immunized with purified, recombinant Human c-Abl / ABL1 . c-Abl / ABL1 specific IgG was purified by Human c-Abl / ABL1 affinity chromatography.

## Formulation

0.2 µm filtered solution in PBS

## Storage

This antibody can be stored at 2°C-8°C for one month without detectable loss of activity. Antibody products are stable for twelve months from date of receipt when stored at -20°C to -80°C.

Preservative-Free.

Sodium azide is recommended to avoid contamination (final concentration 0.05%-0.1%). It is toxic to cells and should be disposed of properly. Avoid repeated freeze-thaw cycles.

## Clonality

Polyclonal

## Ig Type

Rabbit IgG

## Applications

ELISA, IHC-P, ICC/IF, IF

## Dilutions

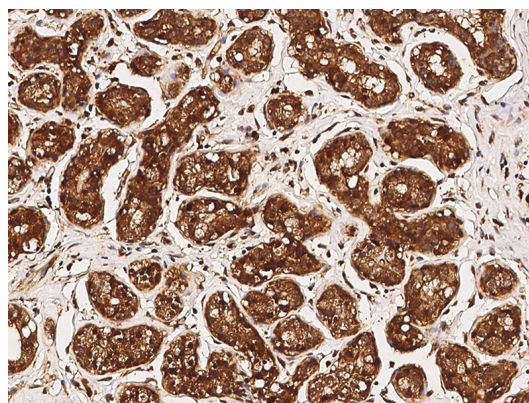
ELISA: 0.1-0.2 µg/mL

This antibody can be used at 0.1-0.2 µg/mL with the appropriate secondary reagents to detect Human c-Abl / ABL1.

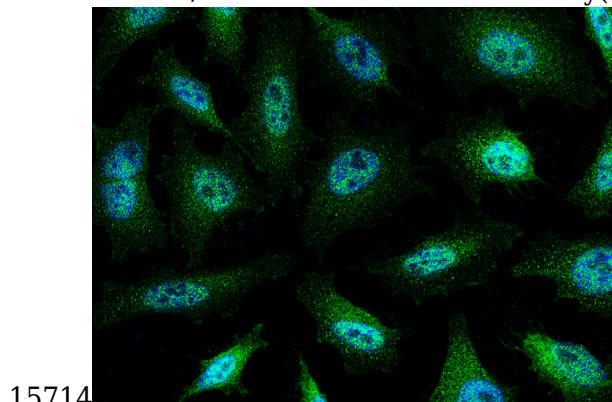
IHC-P: 0.1-2µg/mL

ICC/IF: 0.5-3µg/mL

## Validations



Human c-Abl / ABL1 Immunohistochemistry(IHC)



Human c-Abl / ABL1 Immunofluorescence(IF)  
15715