

Anti-SDC2 antibody



Catalog Number: 142595

Product name

Anti-SDC2 antibody

Specificity

Rat Syndecan-2 / SDC2

Antibody description

Rabbit Polyclonal to Rat SDC2

Preparation

Produced in rabbits immunized with a synthetic peptide corresponding to the center region of the Rat Syndecan-2 / SDC2, and purified by antigen affinity chromatography.

Formulation

0.2 µm filtered solution in PBS

Storage

This antibody can be stored at 2°C-8°C for one month without detectable loss of activity. Antibody products are stable for twelve months from date of receipt when stored at -20°C to -80°C.

Preservative-Free.

Sodium azide is recommended to avoid contamination (final concentration 0.05%-0.1%). It is toxic to cells and should be disposed of

properly. Avoid repeated freeze-thaw cycles.

Clonality

Polyclonal

Ig Type

Rabbit IgG

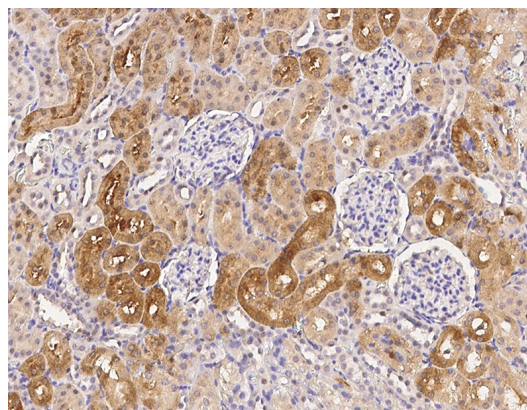
Applications

IHC-P

Dilutions

IHC-P: 0.1-2 µg/mL

Validations



Rat Syndecan-2/SDC2
Immunohistochemistry(IHC) 14637