

Anti-ATP1B1 antibody



Catalog Number: 142545

Product name

Anti-ATP1B1 antibody

Immunogen

[Human ATP1B1 \(His Tag\) recombinant protein](#)

Specificity

Human ATP1B1

Antibody description

Rabbit Polyclonal to Human ATP1B1

Preparation

Produced in rabbits immunized with purified, recombinant Human ATP1B1. ATP1B1 specific IgG was purified by Human ATP1B1 affinity chromatography.

Formulation

0.2 µm filtered solution in PBS

Storage

This antibody can be stored at 2°C-8°C for one month without detectable loss of activity. Antibody products are stable for twelve months from date of receipt when stored at -20°C to -80°C.

Preservative-Free.

Sodium azide is recommended to avoid contamination (final concentration 0.05%-0.1%). It is toxic to cells and should be disposed of properly. Avoid repeated freeze-thaw cycles.

Clonality

Polyclonal

Ig Type

Rabbit IgG

Applications

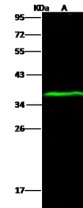
WB, IHC-P

Dilutions

WB: 5-20 µg/ml

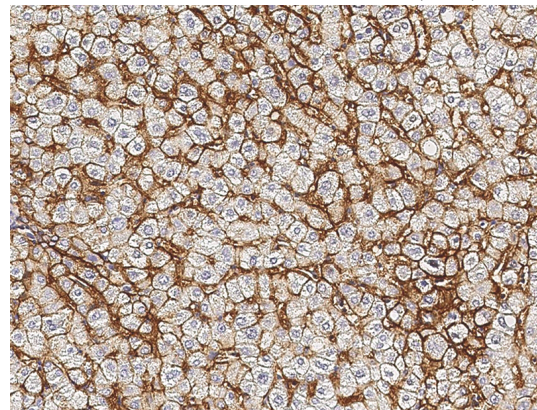
IHC-P: 0.1-2 µg/mL

Validations

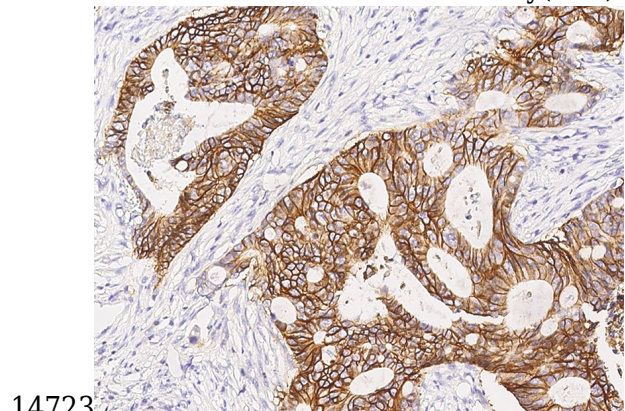


Items	Lanes	A
Sample (whole cell lysate)		MOLT4
Sample Volume (µg/lane)		30
Gel		13% SDS-PAGE reducing gel
Recommended Concentration		5-20 µg/ml
Secondary Antibody		Dylight 800-labeled Antibody to Rabbit IgG (H+L), at 1:5000 dilution. Developed using Odyssey imaging system.
Explanation		Predicted band size : 35 kDa Observed band size : 37 kDa

Human ATP1B1 Western blot (WB) 14722



Human ATP1B1 Immunohistochemistry(IHC)



14723

Human ATP1B1 Immunohistochemistry(IHC)

14724