

# Anti-INHBB antibody



Catalog Number: 142528

## Product name

Anti-INHBB antibody

## Specificity

Human Inhibin beta B / INHBB

## Antibody description

Rabbit Polyclonal to Human INHBB

## Preparation

Produced in rabbits immunized with a synthetic peptide corresponding to the N-terminus of the Human Inhibin beta B / INHBB, and purified by antigen affinity chromatography.

## Formulation

0.2 µm filtered solution in PBS

## Storage

This antibody can be stored at 2°C-8°C for one month without detectable loss of activity. Antibody products are stable for twelve months from date of receipt when stored at -20°C to -80°C.

Preservative-Free.

Sodium azide is recommended to avoid contamination (final concentration 0.05%-0.1%). It is toxic to cells and should be disposed of properly. Avoid repeated freeze-thaw cycles.

## Clonality

Polyclonal

## Ig Type

Rabbit IgG

## Applications

WB, IHC-P, ICC/IF, IF

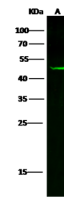
## Dilutions

WB: 5-20 µg/ml

IHC-P: 0.1-2 µg/mL

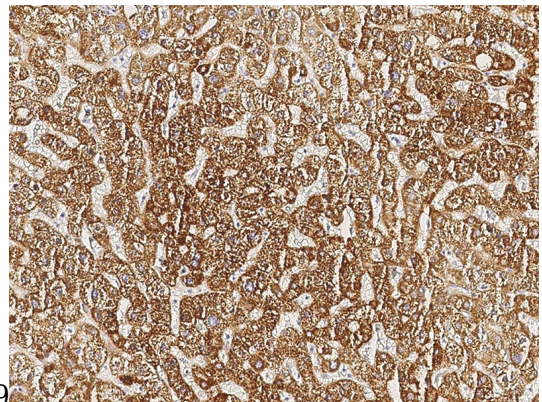
ICC/IF: 0.5-3 µg/mL

## Validations

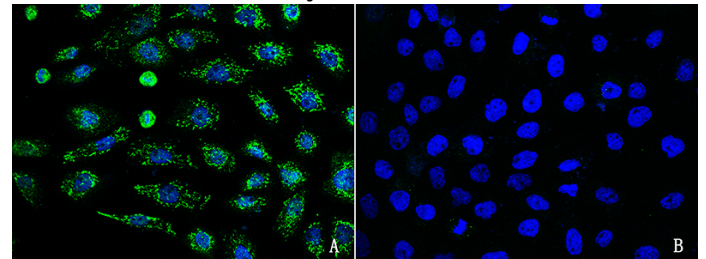


Items	Lanes
Sample (whole cell lysate)	A431
Sample Volume (µg/lane)	30
Gel	13% SDS-PAGE reducing gel
Recommended Concentration	5-20 µg/ml
Secondary Antibody	Dylight 800 labeled Antibody to Rabbit IgG (H+L), at 1:5000 dilution.
Explanation	Developed using Odyssey imaging system. Predicted band size : 45 kDa Observed band size : 47 kDa

## Human Inhibin beta B/INHBB Western blot (WB)



## Human Inhibin beta B/INHBB Immunohistochemistry(IHC) 14620



## Human Inhibin beta B/INHBB Immunofluorescence(IF) 14621