

# Anti-GMFB antibody



Catalog Number: 142444

## Product name

Anti-GMFB antibody

## Specificity

Human GMFB

## Antibody description

Rabbit Polyclonal to Human GMFB

## Preparation

Produced in rabbits immunized with a synthetic peptide corresponding to the N-terminus of the Human GMFB, and purified by antigen affinity chromatography.

## Formulation

0.2 µm filtered solution in PBS

## Storage

This antibody can be stored at 2°C-8°C for one month without detectable loss of activity. Antibody products are stable for twelve months from date of receipt when stored at -20°C to -80°C.

Preservative-Free.

Sodium azide is recommended to avoid contamination (final concentration 0.05%-0.1%). It is toxic to cells and should be disposed of properly. Avoid repeated freeze-thaw cycles.

## Clonality

Polyclonal

## Ig Type

Rabbit IgG

## Applications

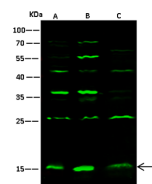
WB, ICC/IF, IF

## Dilutions

WB: 5-10 µg/ml

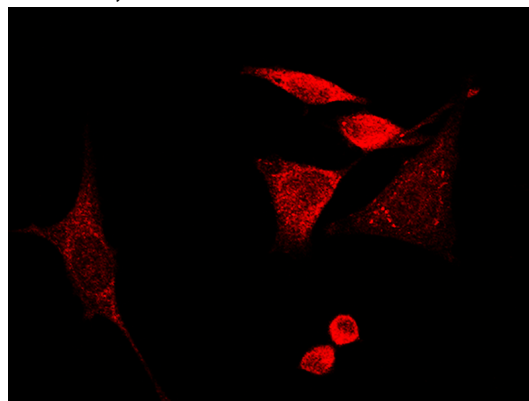
ICC/IF: 0.5-3 µg/mL

## Validations



Items \ Lanes	A	B	C
Sample (whole cell lysate)	HepG2	Jurkat	Raji
Sample Volume (µg/lane)	30	30	30
Gel	13% SDS-PAGE reducing gel		
Recommended Concentration	5-10 µg/ml		
Secondary Antibody	Dylight 800-labeled Antibody To Rabbit IgG (H+L), at 1:5000 dilution; Developed using Odyssey imaging system.		
Explanation	Predicted band size : 17 kDa Observed band size : 17 kDa Additional bands at : 70kDa, 55 kDa, 45kDa, 37kDa and 25 kDa (We are unsure as to the identity of these extra bands.)		

GMFB Antibody, Rabbit PAb, Antigen Affinity Purified, Western blot



GMFB Antibody, Rabbit PAb, Antigen Affinity Purified, Immunofluorescence