

Anti-MME antibody



Catalog Number: 142421

Product name

Anti-MME antibody

Immunogen

[Rhesus CD10/Neprilysin \(His Tag\) recombinant protein](#)

Specificity

Rhesus CD10 / Neprilysin / MME

Antibody description

Rabbit Polyclonal to Rhesus MME

Preparation

Produced in rabbits immunized with purified, recombinant Rhesus CD10 / Neprilysin / MME . CD10 / Neprilysin / MME specific IgG was purified by Rhesus CD10 / Neprilysin / MME affinity chromatography.

Formulation

0.2 µm filtered solution in PBS

Storage

This antibody can be stored at 2°C-8°C for one month without detectable loss of activity. Antibody products are stable for twelve months from date of receipt when stored at -20°C to -80°C. Preservative-Free.

Sodium azide is recommended to avoid contamination (final concentration 0.05%-0.1%). It is toxic to cells and should be disposed of properly. Avoid repeated freeze-thaw cycles.

Clonality

Polyclonal

Ig Type

Rabbit IgG

Applications

WB, ELISA, IHC-P, IP

Dilutions

WB: 5-10 µg/ml

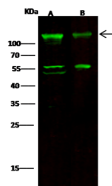
ELISA: 0.1-0.2 µg/ml

This antibody can be used at 0.1-0.2 µg/ml with the appropriate secondary reagents to detect Rhesus CD10 / Neprilysin / MME.

IHC-P: 0.1-2 µg/mL

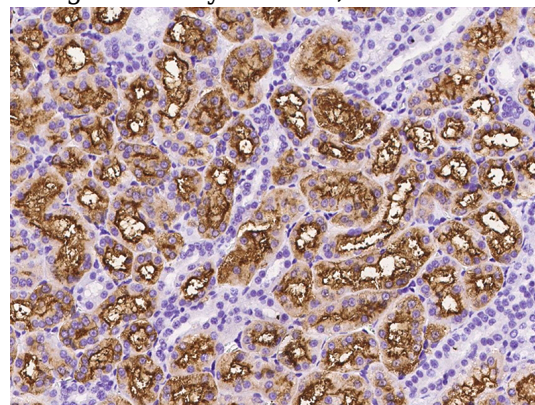
IP: 1-4 uL/mg of lysate

Validations



Lanes	A	B
Sample (whole cell lysate)	Raji	Daudi
Sample Volume (µg/lane)	30	30
Gel	13% SDS-PAGE reducing gel	
Recommended Concentration	5-10 µg/ml	
Secondary Antibody	Dylight 800 labeled Antibody to Rabbit IgG (H+L), at 1:5000 dilution.	
Developed using Odyssey imaging system.		
Explanation	Predicted band size : 86 kDa Observed band size : 120 kDa Additional bands at : 55 kDa and 50 kDa (We are unsure as to the identity of these extra bands.)	

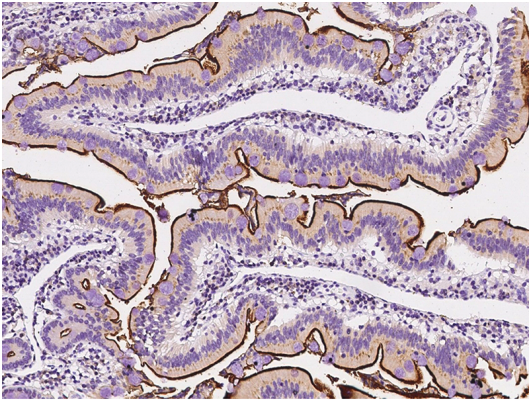
CD10 / Neprilysin / MME Antibody, Rabbit PAb, Antigen Affinity Purified, Western blot



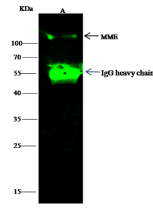
CD10 / Neprilysin / MME Antibody, Rabbit PAb, Antigen Affinity Purified, Immunohistochemistry

Anti-MME antibody

Catalog Number: 142421



CD10 / Nephrylsin / MME Antibody, Rabbit PAb, Antigen Affinity Purified, Immunohistochemistry



Items	A
Sample (whole cell lysate)	Raji
Sample quantity	0.5 mg
IP antibody quantity	2 µg
Immunoaffinity beads (Protein G)	60 µg
Gel	15% SDS-PAGE reducing gel
Primary antibody	CycloMME antibody at 10 µg/ml
Secondary antibody	DyLight 800-labeled antibody to rabbit IgG (111), at 1:5000 dilution

CD10 / Nephrylsin / MME Antibody, Rabbit PAb, Antigen Affinity Purified, Immunoprecipitation