

# Anti-GAPDH antibody



Catalog Number: 142409

## General Information

### Product name:

Anti-GAPDH antibody

### Immunogen:

[Human GAPDH \(His Tag\) recombinant protein](#)

### Applications:

WB, ELISA, IP

### Specificity:

Human GAPDH

### Antibody description:

Rabbit Polyclonal to Human GAPDH

## Properties

### Preparation:

Produced in rabbits immunized with purified, recombinant Human GAPDH . GAPDH specific IgG was purified by Human GAPDH affinity chromatography.

### Formulation:

0.2 µm filtered solution in PBS

### Storage:

This antibody can be stored at 2°C-8°C for one month without detectable loss of activity. Antibody products are stable for twelve months from date of receipt when stored at -20°C to -80°C. Preservative-Free.

Sodium azide is recommended to avoid contamination (final concentration 0.05%-0.1%). It is toxic to cells and should be disposed of properly. Avoid repeated freeze-thaw cycles.

### Clonality:

Polyclonal

**Ig Type:**Rabbit IgG

## Applications

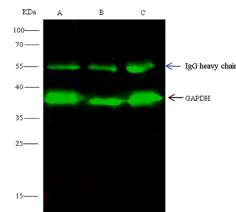
WB: 1-5 µg/ml

ELISA: 0.1-0.2 µg/ml

This antibody can be used at 0.1-0.2 µg/ml with the appropriate secondary reagents to detect Human GAPDH.

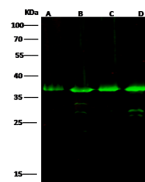
IP: 0.5-2 µg/mg of lysate

## Validations



Lanes	A	B	C
Items			
Sample (whole cell lysate)	HepG2	Jurkat	HeLa
Sample quantity	0.5 mg		
IP antibody quantity	4 µg		
Immunomagnetic beads Protein G	60 µg		
Gel	13% SDS-PAGE reducing gel		
Primary antibody	Hi-GAPDH antibody at 10 µg/ml		
Secondary antibody	Dylight 800-labeled antibody to rabbit IgG (H+L), at 1:5000 dilution		

GAPDH Antibody, Rabbit PAb, Antigen Affinity Purified, Immunoprecipitation



Lanes	A	B	C	D
Items				
Sample (whole cell lysate)	HepG2	Jurkat	HeLa	M31
Sample Volume (µg/lane)	30	30	30	30
Gel	13% SDS-PAGE reducing gel			
Recommended concentration	10 µg/ml			
Secondary Antibody	Dylight 800 labeled Antibody to Rabbit IgG (H+L), at 1:5000 dilution.			
	Developed using Odyssey imaging system.			
Explanation	Predicted band size : 36 kDa Observed band size : 36 kDa Additional bands at : 32 kDa and 30 kDa (We are unsure as to the identity of these extra bands.)			

GAPDH Antibody, Rabbit PAb, Antigen Affinity Purified, Western blot