

Anti-SELL antibody

Catalog Number: 142337

Product name

Anti-SELL antibody

Specificity

RAT CD62L / L-Selectin

Antibody description

Rabbit Polyclonal to RAT SELL

Preparation

Produced in rabbits immunized with a synthetic peptide corresponding to the N-terminus of the RAT CD62L / L-Selectin, and purified by antigen affinity chromatography.

Formulation

0.2 µm filtered solution in PBS

Storage

This antibody can be stored at 2°C-8°C for one month without detectable loss of activity. Antibody products are stable for twelve months from date of receipt when stored at -20°C to -80°C.

Preservative-Free.

Sodium azide is recommended to avoid contamination (final concentration 0.05%-0.1%). It is toxic to cells and should be disposed of properly. Avoid repeated freeze-thaw cycles.

Clonality

Polyclonal

Ig Type

Rabbit IgG

Applications

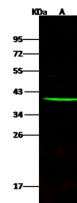
WB, IHC-P

Dilutions

WB: 5-20 µg/ml

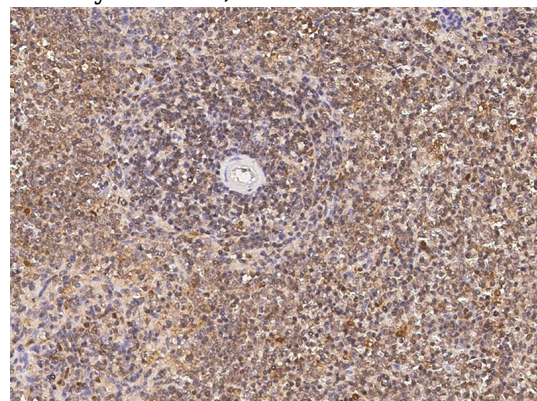
IHC-P: 0.1-2 µg/mL

Validations



Items	Lanes
Sample (whole cell lysate)	A549
Sample Volume (µg/lane)	30
Gel	13% SDS-PAGE reducing gel
Recommended Concentration	5-20 µg/ml
Secondary Antibody	Dylight 800-labeled Antibody to Rabbit IgG (1:1), at 1:500 dilution.
Explanation	Developed using Odyssey imaging system. Predicted band size : 42 kDa Observed band size : 40 kDa

CD62L / L-Selectin Antibody, Rabbit PAb, Antigen Affinity Purified, Western blot



CD62L / L-Selectin Antibody, Rabbit PAb, Antigen Affinity Purified, Immunohistochemistry