

Anti-BMI1 antibody



Catalog Number: 142265

Product name

Anti-BMI1 antibody

Specificity

Human BMI1

Antibody description

Rabbit Polyclonal to Human BMI1

Preparation

Produced in rabbits immunized with a synthetic peptide corresponding to the C-terminus of the Human BMI1, and purified by antigen affinity chromatography.

Formulation

0.2 µm filtered solution in PBS

Storage

This antibody can be stored at 2°C-8°C for one month without detectable loss of activity. Antibody products are stable for twelve months from date of receipt when stored at -20°C to -80°C.

Preservative-Free.

Sodium azide is recommended to avoid contamination (final concentration 0.05%-0.1%). It is toxic to cells and should be disposed of properly. Avoid repeated freeze-thaw cycles.

Clonality

Polyclonal

Ig Type

Rabbit IgG

Applications

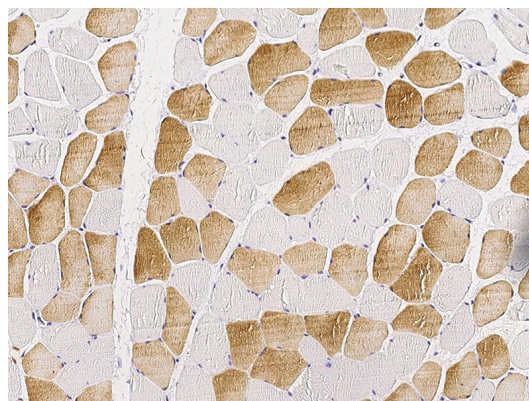
IHC-P, ICC/IF, IF

Dilutions

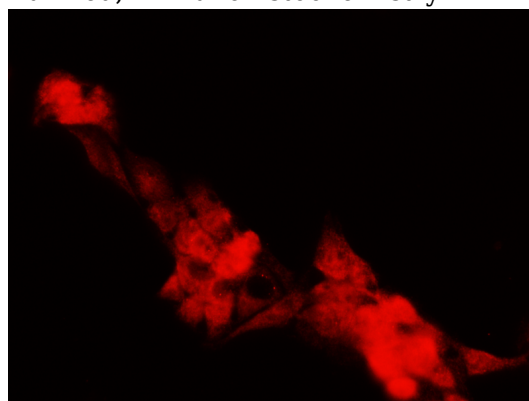
IHC-P: 0.1-2 µg/mL

ICC/IF: 0.5-3 µg/mL

Validations



BMI1 Antibody, Rabbit PAb, Antigen Affinity Purified, Immunohistochemistry



BMI1 Antibody, Rabbit PAb, Antigen Affinity Purified, Immunofluorescence