

Anti-TUBB3 antibody

Catalog Number: 142248

Product name

Anti-TUBB3 antibody

Specificity

Human TUBB3 / beta III Tubulin

Antibody description

Rabbit Polyclonal to Human TUBB3

Preparation

Produced in rabbits immunized with a synthetic peptide corresponding to the C-terminus of the Human TUBB3 / beta III Tubulin, and purified by antigen affinity chromatography.

Formulation

0.2 µm filtered solution in PBS

Storage

This antibody can be stored at 2°C-8°C for one month without detectable loss of activity. Antibody products are stable for twelve months from date of receipt when stored at -20°C to -80°C.

Preservative-Free.

Sodium azide is recommended to avoid contamination (final concentration 0.05%-0.1%). It is toxic to cells and should be disposed of properly. Avoid repeated freeze-thaw cycles.

Clonality

Polyclonal

Ig Type

Rabbit IgG

Applications

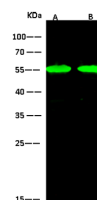
WB, ICC/IF, IF

Dilutions

WB: 1-10 µg/ml

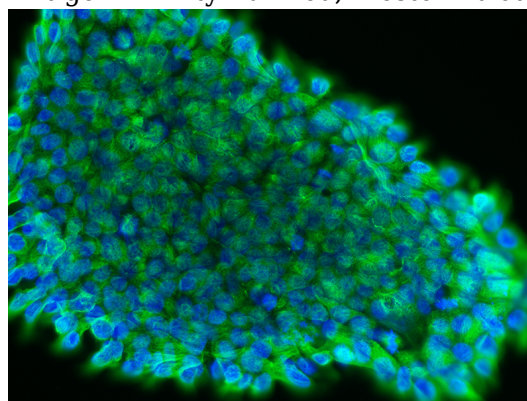
ICC/IF: 0.5-1.5 µg/mL

Validations



Items	Lanes	A	B
Sample (whole cell lysate)		A549	HepG2
Sample Volume (µg/lane)		30	30
Gel	13% SDS-PAGE reducing gel		
Recommended Concentration	1-10 µg/ml		
Secondary Antibody	Dylight 800-labeled Antibody To Rabbit IgG (H+L), at 1:5000 dilution.		
Explanation	Developed using Odyssey imaging system. Predicted band size : 50 kDa Observed band size : 55 kDa		

TUBB3 / beta III Tubulin Antibody, Rabbit PAb, Antigen Affinity Purified, Western blot



TUBB3 / beta III Tubulin Antibody, Rabbit PAb, Antigen Affinity Purified, Immunofluorescence