

# Anti-SETD8 antibody



Catalog Number: 142239

## Product name

Anti-SETD8 antibody

## Immunogen

[Human SETD8/PR-Set7 recombinant protein](#)

## Specificity

Human SETD8 / PR-Set7

## Antibody description

Rabbit Polyclonal to Human SETD8

## Preparation

Produced in rabbits immunized with purified, recombinant Human SETD8 / PR-Set7. SETD8 / PR-Set7 specific IgG was purified by Human SETD8 / PR-Set7 affinity chromatography.

## Formulation

0.2 µm filtered solution in PBS

## Storage

This antibody can be stored at 2°C-8°C for one month without detectable loss of activity. Antibody products are stable for twelve months from date of receipt when stored at -20°C to -80°C.

Preservative-Free.

Sodium azide is recommended to avoid contamination (final concentration 0.05%-0.1%). It is toxic to cells and should be disposed of

properly. Avoid repeated freeze-thaw cycles.

## Clonality

Polyclonal

## Ig Type

Rabbit IgG

## Applications

WB, ELISA

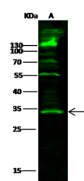
## Dilutions

WB: 5-20 µg/ml

ELISA: 0.1-0.2 µg/ml

This antibody can be used at 0.1-0.2 µg/ml with the appropriate secondary reagents to detect Human SETD8 / PR-Set7.

## Validations



Items	Lanes	A
Sample (whole cell lysate)		293
Sample Volume (µg/lane)		30
Gel		13% SDS-PAGE reducing gel
Recommended Concentration		5-20 µg/ml
Secondary Antibody		Dylight 800 labeled Antibody to Rabbit IgG (H+L), at 1:5000 dilution.
Explanation		Developed using Odyssey imaging system. Predicted band size : 43 kDa Observed band size : 34 kDa Additional bands at : 55 kDa, 70 kDa and 130 kDa (We are unsure as to the identity of these extra bands.)

Human SETD8/PR-Set7 Western blot (WB) 14709