

# Anti-ERCC2 antibody



Catalog Number: 142237

## Product name

Anti-ERCC2 antibody

## Specificity

Human ERCC2 / XPD

## Antibody description

Rabbit Polyclonal to Human ERCC2

## Preparation

Produced in rabbits immunized with a synthetic peptide corresponding to the center region of the Human ERCC2 / XPD, and purified by antigen affinity chromatography.

## Formulation

0.2  $\mu$ m filtered solution in PBS

## Storage

This antibody can be stored at 2°C-8°C for one month without detectable loss of activity. Antibody products are stable for twelve months from date of receipt when stored at -20°C to -80°C.

Preservative-Free.

Sodium azide is recommended to avoid contamination (final concentration 0.05%-0.1%). It is toxic to cells and should be disposed of

properly. Avoid repeated freeze-thaw cycles.

## Clonality

Polyclonal

## Ig Type

Rabbit IgG

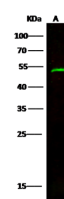
## Applications

WB

## Dilutions

WB: 1-5  $\mu$ g/ml

## Validations



Items	Lanes
Sample (whole cell lysate)	NIH-3T3
Sample Volume ( $\mu$ g/lane)	30
Gel	13% SDS-PAGE reducing gel
Recommended Concentration	10 $\mu$ g/ml
Secondary Antibody	Dylight 800-labeled Antibody To Rabbit IgG (H+L), at 1:5000 dilution.
Explanation	Developed using Odyssey imaging system. Predicted band size : 41 kDa Observed band size : 50 kDa

ERCC2 / XPD Antibody, Rabbit PAb, Antigen Affinity Purified, Western blot