

# Anti-LEPR antibody



Catalog Number: 142032

---

## Product name

Anti-LEPR antibody

## Specificity

Rat Leptin Receptor / CD295

## Antibody description

Rabbit Polyclonal to Rat LEPR

## Preparation

Produced in rabbits immunized with a synthetic peptide corresponding to the N-terminus of the Rat Leptin Receptor / CD295, and purified by antigen affinity chromatography.

## Formulation

0.2 µm filtered solution in PBS

## Storage

This antibody can be stored at 2°C-8°C for one month without detectable loss of activity. Antibody products are stable for twelve months from date of receipt when stored at -20°C to -80°C.

Preservative-Free.

Sodium azide is recommended to avoid contamination (final concentration 0.05%-0.1%). It is toxic to cells and should be disposed of

properly. Avoid repeated freeze-thaw cycles.

## Clonality

Polyclonal

## Ig Type

Rabbit IgG

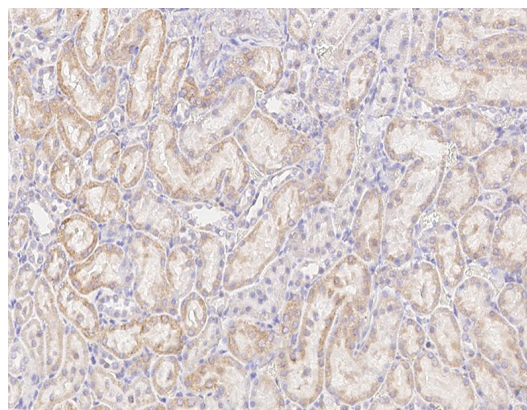
## Applications

IHC-P

## Dilutions

IHC-P: 0.1-2 µg/mL

## Validations



Rat Leptin Receptor/CD295  
Immunohistochemistry(IHC) 15033