

Anti-MYT1 antibody



Catalog Number: 142030

Product name

Anti-MYT1 antibody

Specificity

Human MYT1

Antibody description

Rabbit Polyclonal to Human MYT1

Preparation

Produced in rabbits immunized with a synthetic peptide corresponding to the center region of the Human MYT1, and purified by antigen affinity chromatography.

Formulation

0.2 µm filtered solution in PBS

Storage

This antibody can be stored at 2°C-8°C for one month without detectable loss of activity. Antibody products are stable for twelve months from date of receipt when stored at -20°C to -80°C.

Preservative-Free.

Sodium azide is recommended to avoid contamination (final concentration 0.05%-0.1%). It is toxic to cells and should be disposed of properly. Avoid repeated freeze-thaw cycles.

Clonality

Polyclonal

Ig Type

Rabbit IgG

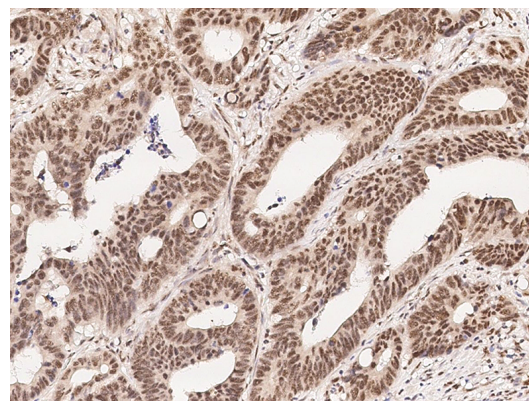
Applications

IHC-P

Dilutions

IHC-P: 0.1-2 µg/mL

Validations



Human MYT1 / NZF2 Immunohistochemistry(IHC)



15044

Human MYT1 / NZF2 Immunohistochemistry(IHC)
15043