

# Anti-TREM1 antibody



Catalog Number: 142015

## Product name

Anti-TREM1 antibody

## Immunogen

[Human TREM-1/TREM1 \(His Tag\) recombinant protein](#)

## Specificity

Human TREM-1 / TREM1

## Antibody description

Rabbit Polyclonal to Human TREM1

## Preparation

Produced in rabbits immunized with purified, recombinant Human TREM-1 / TREM1 . TREM-1 / TREM1 specific IgG was purified by Human TREM-1 / TREM1 affinity chromatography.

## Formulation

0.2 µm filtered solution in PBS

## Storage

This antibody can be stored at 2°C-8°C for one month without detectable loss of activity. Antibody products are stable for twelve months from date of receipt when stored at -20°C to -80°C.

Preservative-Free.

Sodium azide is recommended to avoid contamination (final concentration 0.05%-0.1%). It is toxic to cells and should be disposed of

properly. Avoid repeated freeze-thaw cycles.

## Clonality

Polyclonal

## Ig Type

Rabbit IgG

## Applications

ELISA, IHC-P

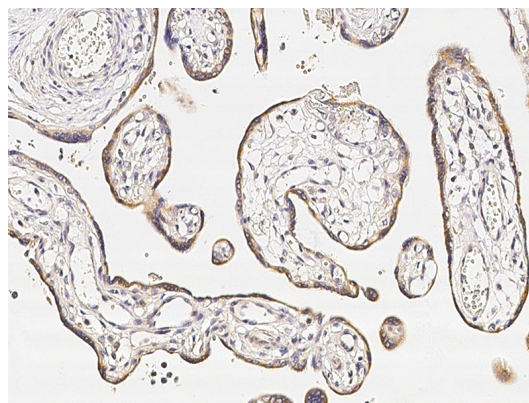
## Dilutions

ELISA: 0.1-0.2 µg/mL

This antibody can be used at 0.1-0.2 µg/mL with the appropriate secondary reagents to detect Human TREM-1 / TREM1.

IHC-P: 0.5-2 µg/mL

## Validations



Human TREM-1/TREM1  
Immunohistochemistry(IHC) 15022