

Anti-ENPEP antibody



Catalog Number: 141997

Product name

Anti-ENPEP antibody

Immunogen

[Mouse ENPEP / Aminopeptidase A \(His Tag\) recombinant protein](#)

Specificity

Mouse ENPEP / Aminopeptidase A

Antibody description

Rabbit Polyclonal to Mouse ENPEP

Preparation

Produced in rabbits immunized with purified, recombinant Mouse ENPEP / Aminopeptidase A . ENPEP / Aminopeptidase A specific IgG was purified by Mouse ENPEP / Aminopeptidase A affinity chromatography.

Formulation

0.2 µm filtered solution in PBS

Storage

This antibody can be stored at 2°C-8°C for one month without detectable loss of activity. Antibody products are stable for twelve months from date of receipt when stored at -20°C to -80°C.

Preservative-Free.

Sodium azide is recommended to avoid contamination (final concentration 0.05%-0.1%). It is toxic to cells and should be disposed of

properly. Avoid repeated freeze-thaw cycles.

Clonality

Polyclonal

Ig Type

Rabbit IgG

Applications

ELISA, IHC-P

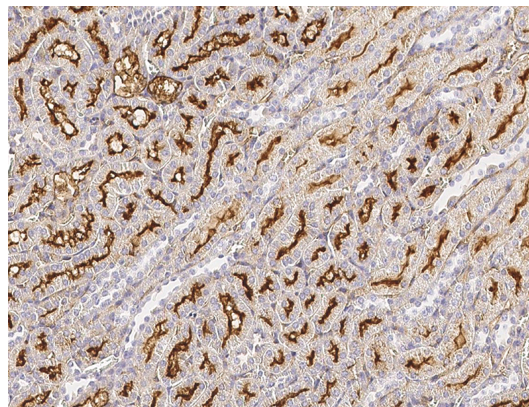
Dilutions

ELISA: 0.1-0.2 µg/mL

This antibody can be used at 0.1-0.2 µg/mL with the appropriate secondary reagents to detect Mouse ENPEP / Aminopeptidase A.

IHC-P: 0.05-1 µg/mL

Validations



Mouse ENPEP / Aminopeptidase A
Immunohistochemistry(IHC) 15018