

Anti-TUBA4A antibody



Catalog Number: 141804

Product name

Anti-TUBA4A antibody

Specificity

Human TUBA4A

Antibody description

Rabbit Polyclonal to Human TUBA4A

Preparation

Produced in rabbits immunized with a synthetic peptide corresponding to the C-terminus of the Human TUBA4A, and purified by antigen affinity chromatography.

Formulation

0.2 μ m filtered solution in PBS

Storage

This antibody can be stored at 2°C-8°C for one month without detectable loss of activity. Antibody products are stable for twelve months from date of receipt when stored at -20°C to -80°C. Preservative-Free.

Sodium azide is recommended to avoid contamination (final concentration 0.05%-0.1%). It is toxic to cells and should be disposed of properly. Avoid repeated freeze-thaw cycles.

Clonality

Polyclonal

Ig Type

Rabbit IgG

Applications

WB, ICC/IF, IF, IP

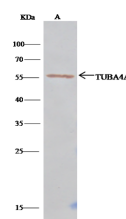
Dilutions

WB: 5-20 μ g/ml

ICC/IF: 0.5-3 μ g/mL

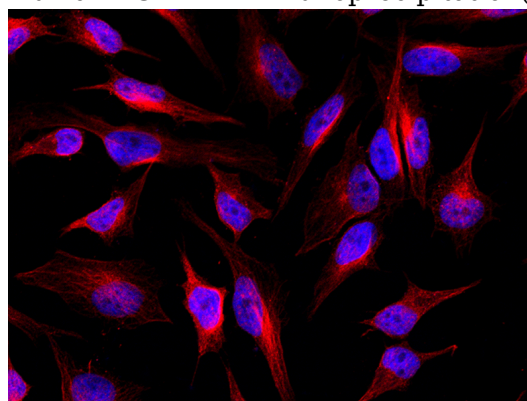
IP: 1-4 uL/mg of lysate

Validations

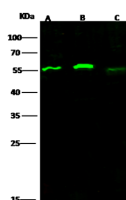


| Items | Lanes | A |
|----------------------------|-------|---|
| Sample (whole cell lysate) | | K562 |
| Sample quantity | | 0.5 mg |
| IP antibody quantity | | 4 μ L |
| Protein G agarose | | 15 μ L of 50% Protein G Agarose |
| Gel | | 13% SDS-PAGE reducing gel |
| Primary antibody | | KLH-SMCC-sinoA2134/KLH-SMCC-sinoA2138 antibody at 10 μ g/ml |
| Secondary antibody | | Clean-Block IP Detection Reagent (HRP) at 1:1000 dilution |

Human TUBA4A Immunoprecipitation(IP) 15407



Human TUBA4A Immunofluorescence(IF) 15406



| Items | Lanes | A | B | C |
|-------------------------------|-------|--|--------|------|
| Sample (whole cell lysate) | | Hela | Jurkat | K562 |
| Sample volume (μ g/lane) | | 30 | 30 | 30 |
| Gel | | 13% SDS-PAGE reducing gel | | |
| Recommended Concentration | | 5-20 μ g/ml | | |
| Secondary Antibody | | Dylight 800-labeled Antibody to Rabbit IgG (H+L), at 1:5000 dilution. | | |
| Explanation | | Developed using Odyssey imaging system. Predicted band size : 50 kDa Observed band size : 55 kDa | | |

Human TUBA4A Western blot (WB) 15405