

Anti-KLK1 antibody



Catalog Number: 141622

Product name

Anti-KLK1 antibody

Immunogen

[Mouse KLK1/Kallikrein 1 \(His Tag\) recombinant protein](#)

Specificity

Mouse KLK1 / Kallikrein 1

Antibody description

Rabbit Polyclonal to Mouse KLK1

Preparation

Produced in rabbits immunized with purified, recombinant Mouse KLK1 / Kallikrein 1. KLK1 / Kallikrein 1 specific IgG was purified by Mouse KLK1 / Kallikrein 1 affinity chromatography.

Formulation

0.2 µm filtered solution in PBS

Storage

This antibody can be stored at 2°C-8°C for one month without detectable loss of activity. Antibody products are stable for twelve months from date of receipt when stored at -20°C to -80°C.

Preservative-Free.

Sodium azide is recommended to avoid contamination (final concentration 0.05%-0.1%). It is toxic to cells and should be disposed of properly. Avoid repeated freeze-thaw cycles.

Clonality

Polyclonal

Ig Type

Rabbit IgG

Applications

ELISA, IHC-P

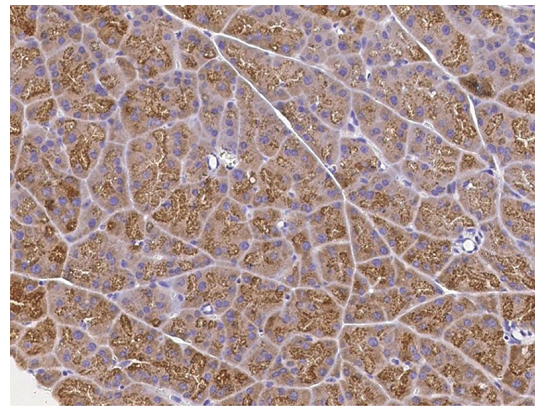
Dilutions

ELISA: 0.1-0.2 µg/ml

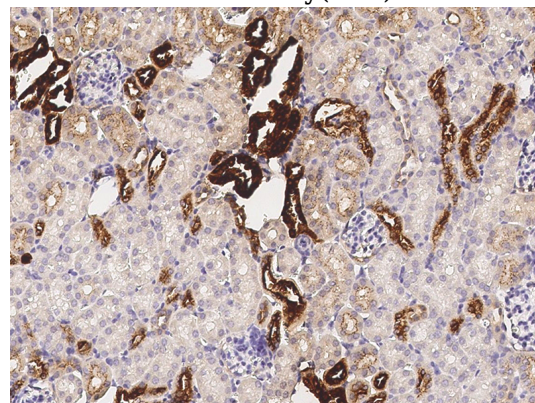
This antibody can be used at 0.1-0.2 µg/ml with the appropriate secondary reagents to detect Mouse KLK1 / Kallikrein 1.

IHC-P: 0.1-1 µg/mL

Validations



Mouse KLK1/Kallikrein 1
Immunohistochemistry(IHC) 14745



Mouse KLK1/Kallikrein 1
Immunohistochemistry(IHC) 14746