

Anti-PON1 antibody



Catalog Number: 141586

Product name

Anti-PON1 antibody

Specificity

Human PON1

Antibody description

Rabbit Polyclonal to Human PON1

Preparation

Produced in rabbits immunized with a synthetic peptide corresponding to the C-terminus of the Human PON1, and purified by antigen affinity chromatography.

Formulation

0.2 µm filtered solution in PBS

Storage

This antibody can be stored at 2°C-8°C for one month without detectable loss of activity. Antibody products are stable for twelve months from date of receipt when stored at -20°C to -80°C.

Preservative-Free.

Sodium azide is recommended to avoid contamination (final concentration 0.05%-0.1%). It is toxic to cells and should be disposed of properly. Avoid repeated freeze-thaw cycles.

Clonality

Polyclonal

Ig Type

Rabbit IgG

Applications

WB, IHC-P, IP

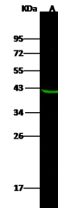
Dilutions

WB: 5-20 µg/ml

IHC-P: 0.1-2 µg/mL

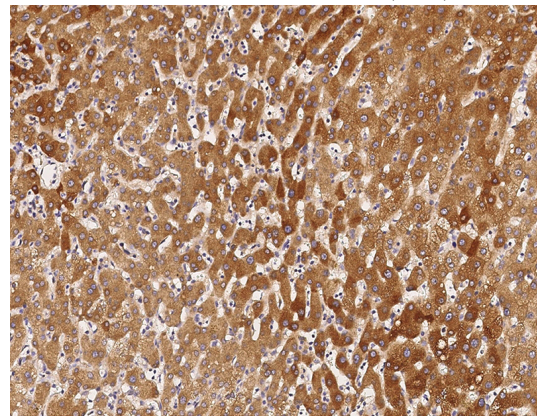
IP: 1-4 µl/mg of lysate

Validations

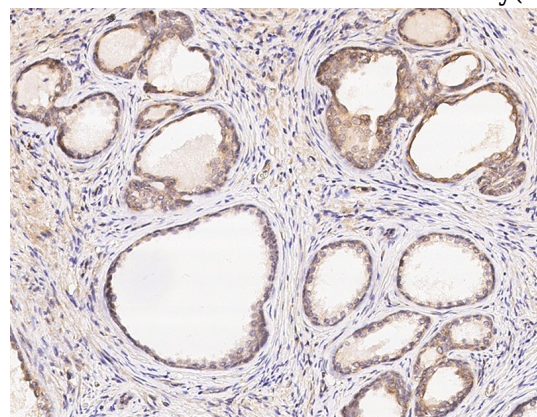


Lanes	A
Items	
Sample (whole cell lysate)	HT29
Sample Volume (µg/lane)	30
Gel	13% SDS-PAGE reducing gel
Recommended Concentration	5-20 µg/ml
Secondary Antibody	Dylight 800-labeled Antibody to Rabbit IgG (H+L), at 1:5000 dilution.
Developed using Odyssey imaging system.	
Explanation	Predicted band size : 40 kDa Observed band size : 40 kDa

Human PON1 Western blot (WB) 15261



Human PON1 Immunohistochemistry(IHC) 15262



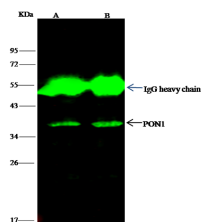
Human PON1 Immunohistochemistry(IHC) 15263

Anti-PON1 antibody



Catalog Number: 141586

Human PON1 Immunoprecipitation(IP) 15264



Lanes	A	B
Items		
Sample (whole cell lysate)	Jurkat	HeLa
Sample quantity	0.5 mg	
IP antibody quantity	4 uL	
Protein G agarose	15 µl of 50% Protein G Agarose	
Gel	13% SDS-PAGE reducing gel	
Primary antibody	KLI1-SMCC-SINOAS09/KLI1-SMCC-SINOA614 antibody at 10 µg/ml	
Secondary antibody	Dylight 800-labeled antibody to rabbit IgG (E11), at 1:5000 dilution	