

Anti-IGF2BP2 antibody



Catalog Number: 141518

Product name

Anti-IGF2BP2 antibody

Immunogen

[Human IGF2BP2 \(His & GST Tag\) recombinant protein](#)

Specificity

Human IGF2BP2/IMP2

Antibody description

Rabbit Polyclonal to Human IGF2BP2

Preparation

Produced in rabbits immunized with purified, recombinant Human IGF2BP2/IMP2 . IGF2BP2/IMP2 specific IgG was purified by Human IGF2BP2/IMP2 affinity chromatography.

Formulation

0.2 µm filtered solution in PBS

Storage

This antibody can be stored at 2°C-8°C for one month without detectable loss of activity. Antibody products are stable for twelve months from date of receipt when stored at -20°C to -80°C. Preservative-Free.

Sodium azide is recommended to avoid contamination (final concentration 0.05%-0.1%). It is toxic to cells and should be disposed of properly. Avoid repeated freeze-thaw cycles.

Clonality

Polyclonal

Ig Type

Rabbit IgG

Applications

WB, IHC-P, ICC/IF, IF

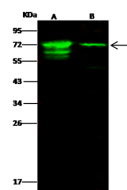
Dilutions

WB: 5-20 µg/ml

IHC-P: 0.1-2µg/mL

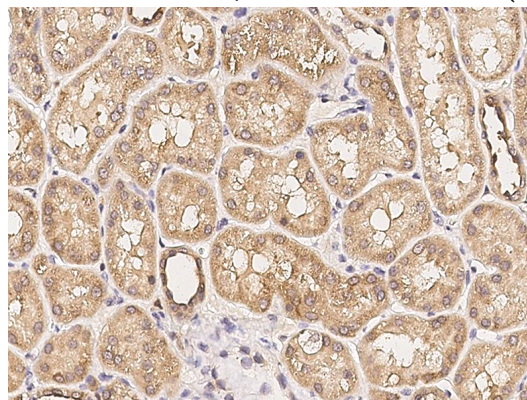
ICC/IF: 0.5-3µg/mL

Validations

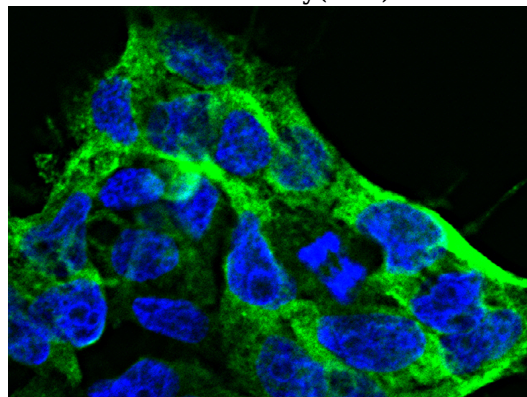


Lanes	A	B
Items		
Sample (whole cell lysate)	HepG2	Jurkat
Sample Volume (µg/lane)	30	30
Gel	13% SDS-PAGE reducing gel	
Recommended Concentration	5-20 µg/ml	
Secondary Antibody	Dylight 800 labeled Antibody To Rabbit IgG (H+L) at 1:5000 dilution.	
Developed using Odyssey imaging system.		
Explanation	Predicted band size : 66 kDa Observed band size : 72 kDa Additional bands at : 59 kDa and 63 kDa (We are	

Human IGF2BP2/IMP2 Western blot (WB) 15417



Human IGF2BP2/IMP2
Immunohistochemistry(IHC) 15418



Anti-IGF2BP2 antibody



Catalog Number: 141518

Human IGF2BP2/IMP2 Immunofluorescence(IF) 15419