

# Anti-TREM1 antibody



Catalog Number: 141430

## Product name

Anti-TREM1 antibody

## Immunogen

[Human TREM-1/TREM1 \(His & Fc Tag\)  
recombinant protein](#)

## Specificity

Human TREM-1 / TREM1

## Antibody description

Mouse Monoclonal to Human TREM1

## Preparation

This antibody was produced from a hybridoma resulting from the fusion of a mouse myeloma with B cells obtained from a mouse immunized with purified, recombinant Human TREM-1 / TREM1 and conjugated with PE under optimum conditions, the unreacted PE was removed.

## Formulation

Aqueous solution containing 0.5% BSA and 0.09% sodium azide

## Storage

This antibody is stable for 12 months from date of receipt when stored at 2°C-8°C. Protected from

prolonged exposure to light. Do not freeze ! Sodium azide is toxic to cells and should be disposed of properly. Flush with large volumes of water during disposal.

## Clonality

Monoclonal

## Ig Type

Mouse IgG1

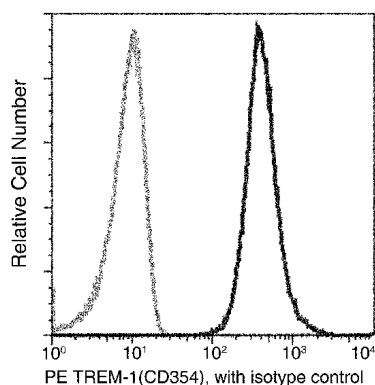
## Applications

FCM

## Dilutions

FCM

## Validations



Human TREM-1/TREM1 Flow Cytometry (FC)  
15076