

# Anti-LRRTM2 antibody



Catalog Number: 141334

## Product name

Anti-LRRTM2 antibody

## Ig Type

Rabbit IgG

## Specificity

Human LRRTM2

## Cross reactivity

React with  
Mouse

## Applications

IHC-P

## Dilutions

IHC-P: 0.1-2 µg/mL

## Antibody description

Rabbit Polyclonal to Human LRRTM2

## Validations

## Preparation

Produced in rabbits immunized with a synthetic peptide corresponding to the C-terminus of the Human LRRTM2, and purified by antigen affinity chromatography.

## Formulation

0.2 µm filtered solution in PBS

## Storage

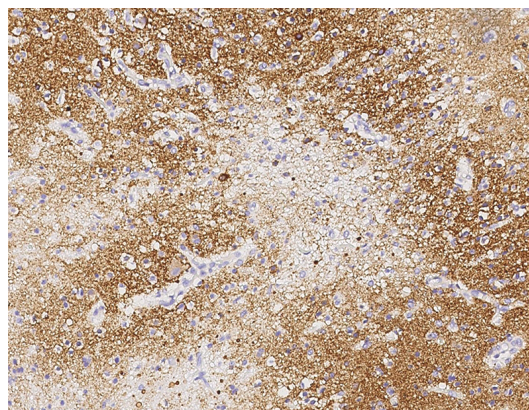
This antibody can be stored at 2°C-8°C for one month without detectable loss of activity. Antibody products are stable for twelve months from date of receipt when stored at -20°C to -80°C.

Preservative-Free.

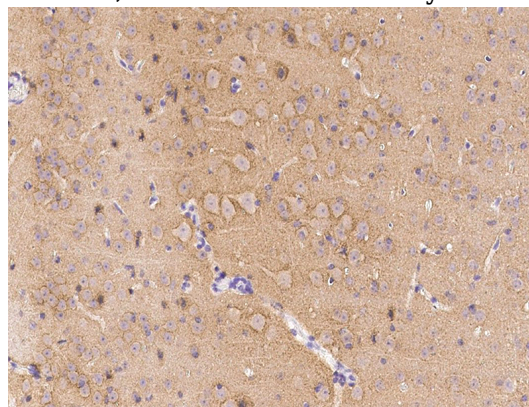
Sodium azide is recommended to avoid contamination (final concentration 0.05%-0.1%). It is toxic to cells and should be disposed of properly. Avoid repeated freeze-thaw cycles.

## Clonality

Polyclonal



LRRTM2 Antibody, Rabbit PAb, Antigen Affinity Purified, Immunohistochemistry



Human LRRTM2 Immunohistochemistry(IHC)  
15062