

Anti-CTBP1 antibody



Catalog Number: 141327

Product name

Anti-CTBP1 antibody

WB: 5-20 µg/ml

IHC-P: 0.1-2 µg/mL

Specificity

Human CTBP1

ICC/IF: 0.5-3 µg/mL

IP: 4-8 uL/mg of lysate

Antibody description

Rabbit Polyclonal to Human CTBP1

Validations

Preparation

Produced in rabbits immunized with a synthetic peptide corresponding to the C-terminus of the Human CTBP1, and purified by antigen affinity chromatography.

Formulation

0.2 µm filtered solution in PBS

Storage

This antibody can be stored at 2°C-8°C for one month without detectable loss of activity. Antibody products are stable for twelve months from date of receipt when stored at -20°C to -80°C. Preservative-Free.

Sodium azide is recommended to avoid contamination (final concentration 0.05%-0.1%). It is toxic to cells and should be disposed of properly. Avoid repeated freeze-thaw cycles.

Clonality

Polyclonal

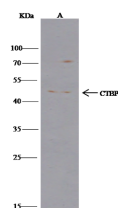
Ig Type

Rabbit IgG

Applications

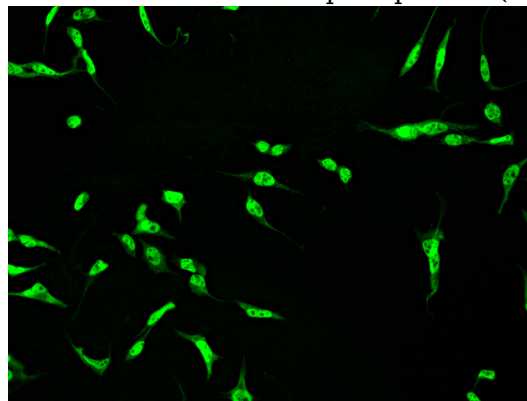
WB, IHC-P, ICC/IF, IF, IP

Dilutions

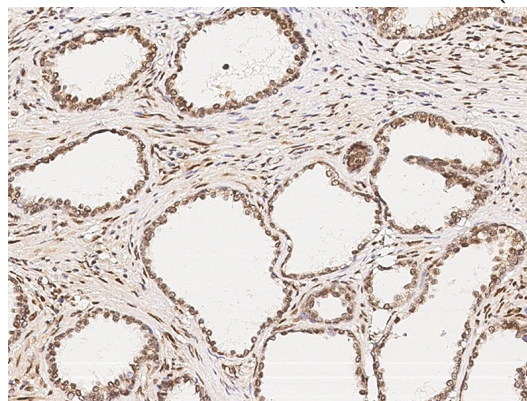


Items	Lanes	A
Sample (whole cell lysate)		HeLa
Sample quantity		0.5 mg
IP antibody quantity		4 µg
Protein G agarose		15 µl of 50% Protein G agarose
Gel		13% SDS-PAGE reducing gel
Primary antibody		KLH-SMCC-αhA83 antibody at 1.0 µg/ml
Secondary antibody		Cleav-Blot0 IP Detection Reagent (HRP) at 1:500 dilution

Human CTBP1 Immunoprecipitation(IP) 15159



Human CTBP1 Immunofluorescence(IF) 15158

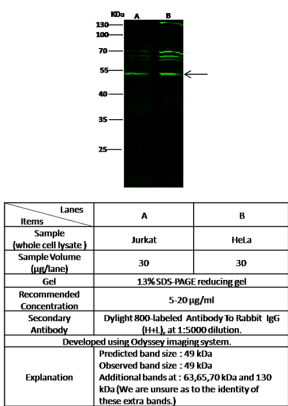
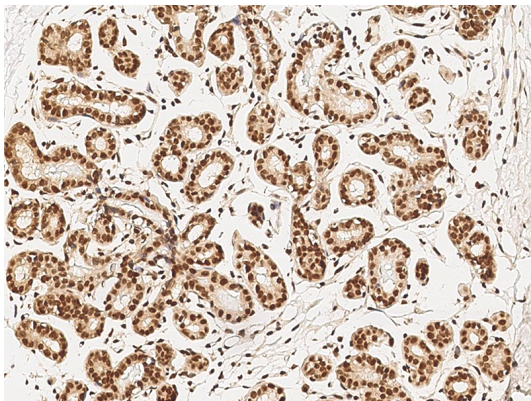


Human CTBP1 Immunohistochemistry(IHC) 15157

Anti-CTBP1 antibody



Catalog Number: 141327



Human CTBP1 Immunohistochemistry(IHC) 15156

Human CTBP1 Western blot (WB) 15155