

# Anti-KYNU antibody



Catalog Number: 141321

## Product name

Anti-KYNU antibody

## Immunogen

[Human KYNU \(His Tag\) recombinant protein](#)

## Specificity

Human KYNU

## Antibody description

Rabbit Monoclonal to Human KYNU

## Preparation

This antibody was obtained from a rabbit immunized with purified, recombinant Human KYNU .

## Formulation

0.2 µm filtered solution in PBS

## Storage

This antibody can be stored at 2°C-8°C for one month without detectable loss of activity. Antibody products are stable for twelve months from date of receipt when stored at -20°C to -80°C.

Preservative-Free.

Sodium azide is recommended to avoid contamination (final concentration 0.05%-0.1%). It is toxic to cells and should be disposed of properly. Avoid repeated freeze-thaw cycles.

## Clonality

Monoclonal

## Ig Type

Rabbit IgG

## Applications

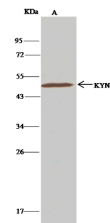
WB, IP

## Dilutions

WB: 5-20 µg/ml

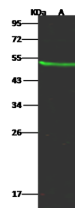
IP: 1-4 µg/mg of lysate

## Validations



Items	Lanes	A
Sample (whole cell lysate)		A549
Sample quantity		0.5 mg
IP antibody quantity		2 µg
Protein G agarose		15 µl of 50% Protein G agarose
Gel		13% SDS-PAGE reducing gel
Primary antibody		KYNU-His antibody at 10 µg/ml
Secondary antibody		Cleav-Block IP Detection Reagent (IBP) at 1:500 dilution

## Human KYNU Immunoprecipitation(IP) 16045



Items	Lanes	A
Sample (whole cell lysate)		A549
Sample Volume (µg/lane)		30
Cell		13% SDS-PAGE reducing gel
Recommended Concentration		5-20 µg/ml
Secondary Antibody		Dylight 800-labeled Antibody to Rabbit IgG (H+L), at 1:5000 dilution.
Developed using Odyssey imaging system.		
Explanation		Predicted band size : 52 kDa Observed band size : 52 kDa

## Human KYNU Western blot (WB) 14851