

# Anti-CPM antibody

Catalog Number: 141295

## Product name

Anti-CPM antibody

## Immunogen

[Human Carboxypeptidase M/CPM \(His Tag\) recombinant protein](#)

## Specificity

Human Carboxypeptidase M / CPM

## Antibody description

Rabbit Polyclonal to Human CPM

## Preparation

Produced in rabbits immunized with purified, recombinant Human Carboxypeptidase M / CPM . Carboxypeptidase M / CPM specific IgG was purified by Human Carboxypeptidase M / CPM affinity chromatography.

## Formulation

0.2 µm filtered solution in PBS

## Storage

This antibody can be stored at 2°C-8°C for one month without detectable loss of activity. Antibody products are stable for twelve months from date of receipt when stored at -20°C to -80°C.

Preservative-Free.

Sodium azide is recommended to avoid contamination (final concentration 0.05%-0.1%). It is toxic to cells and should be disposed of

properly. Avoid repeated freeze-thaw cycles.

## Clonality

Polyclonal

## Ig Type

Rabbit IgG

## Applications

ELISA, IHC-P

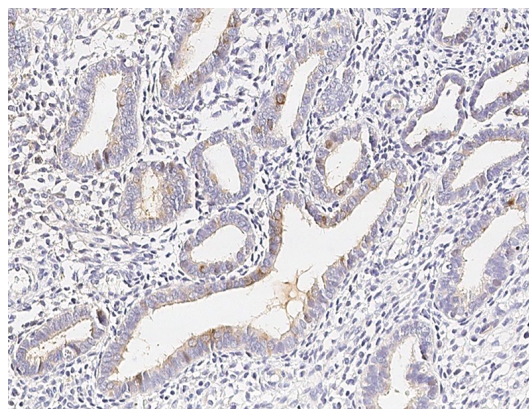
## Dilutions

ELISA: 0.1-0.2 µg/ml

This antibody can be used at 0.1-0.2 with the appropriate secondary reagents to detect Human Carboxypeptidase M / CPM.

IHC-P: 0.05-1 µg/mL

## Validations



Human Carboxypeptidase M/CPM  
Immunohistochemistry(IHC) 14869