

# Anti-SDC1 antibody



Catalog Number: 141250

## Product name

Anti-SDC1 antibody

## Specificity

Human Syndecan-1 / CD138 / SDC1

## Antibody description

Rabbit Polyclonal to Human SDC1

## Preparation

Produced in rabbits immunized with a synthetic peptide corresponding to the center region of the Human Syndecan-1 / CD138 / SDC1, and purified by antigen affinity chromatography.

## Formulation

0.2 µm filtered solution in PBS

## Storage

This antibody can be stored at 2°C-8°C for one month without detectable loss of activity. Antibody products are stable for twelve months from date of receipt when stored at -20°C to -80°C.

Preservative-Free.

Sodium azide is recommended to avoid contamination (final concentration 0.05%-0.1%). It is toxic to cells and should be disposed of properly. Avoid repeated freeze-thaw cycles.

## Clonality

Polyclonal

## Ig Type

Rabbit IgG

## Applications

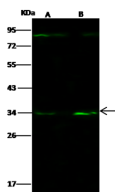
WB, IP

## Dilutions

WB: 5-20 µg/ml

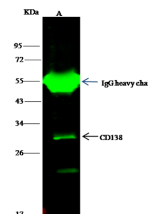
IP: 4-8 uL/mg of lysate

## Validations



Items	Lanes	A	B
Sample (whole cell lysate)		HeLa	Raji
Sample Volume (µg/lane)		30	30
Gel		13% SDS-PAGE reducing gel	
Recommended Concentration		5-20 µg/ml	
Secondary Antibody		Dylight 800-labeled Antibody to Rabbit IgG (F14), at 1:5000 dilution.	
Explanation		Developed using Odyssey imaging system. Predicted band size : 32 kDa Observed band size : 34 kDa Additional bands at : 84 kDa (We are unsure as to the identity of these extra bands.)	

## Human Syndecan-1/CD138/SDC1 Western blot



Items	Lanes	A
Sample (whole cell lysate)		HeLa
Sample quantity		0.5 mg
IP antibody quantity		4 µL
Protein G agarose		15 µl of 50% Protein G agarose
Gel		13% SDS-PAGE reducing gel
Primary antibody		KLH-SMCC-simA620 antibody at 10 µg/ml
Secondary antibody		Dylight 800-labeled antibody to rabbit IgG (F14), at 1:5000 dilution

(WB) 15162

## Human Syndecan-1/CD138/SDC1

Immunoprecipitation(IP) 15163