

# Anti-DACH2 antibody



Catalog Number: 141243

## Product name

Anti-DACH2 antibody

## Specificity

Human DACH2

## Antibody description

Rabbit Polyclonal to Human DACH2

## Preparation

Produced in rabbits immunized with a synthetic peptide corresponding to the center region of the Human DACH2, and purified by antigen affinity chromatography.

## Formulation

0.2 µm filtered solution in PBS

## Storage

This antibody can be stored at 2°C-8°C for one month without detectable loss of activity. Antibody products are stable for twelve months from date of receipt when stored at -20°C to -80°C.

Preservative-Free.

Sodium azide is recommended to avoid contamination (final concentration 0.05%-0.1%). It

is toxic to cells and should be disposed of properly. Avoid repeated freeze-thaw cycles.

## Clonality

Polyclonal

## Ig Type

Rabbit IgG

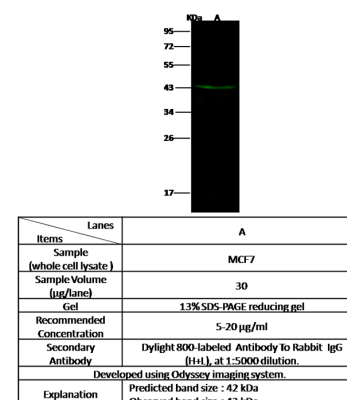
## Applications

WB

## Dilutions

WB: 5-20 µg/ml

## Validations



Human DACH2 Western blot (WB) 14928