

Anti-KIR3DL1 antibody



Catalog Number: 141192

Product name

Anti-KIR3DL1 antibody

Specificity

Human KIR3DL1

Antibody description

Rabbit Polyclonal to Human KIR3DL1

Preparation

Produced in rabbits immunized with a synthetic peptide corresponding to the C-terminus of the Human KIR3DL1, and purified by antigen affinity chromatography.

Formulation

0.2 µm filtered solution in PBS

Storage

This antibody can be stored at 2°C-8°C for one month without detectable loss of activity. Antibody products are stable for twelve months from date of receipt when stored at -20°C to -80°C. Preservative-Free. Sodium azide is recommended to avoid contamination (final concentration 0.05%-0.1%). It is toxic to cells and should be disposed of

properly. Avoid repeated freeze-thaw cycles.

Clonality

Polyclonal

Ig Type

Rabbit IgG

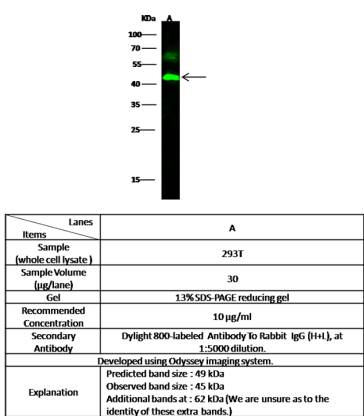
Applications

WB

Dilutions

WB: 0.5-5 µg/ml

Validations



KIR3DL1 Antibody, Rabbit PAb, Antigen Affinity Purified, Western blot