

Anti-CPE antibody

Catalog Number: 141150

Product name

Anti-CPE antibody

Immunogen

[Human Carboxypeptidase E/CPE \(His Tag\) recombinant protein](#)

Specificity

Human Carboxypeptidase E/CPE

Antibody description

Rabbit Polyclonal to Human CPE

Preparation

Produced in rabbits immunized with purified, recombinant Human Carboxypeptidase E/CPE . Carboxypeptidase E/CPE specific IgG was purified by Human Carboxypeptidase E/CPE affinity chromatography.

Formulation

0.2 µm filtered solution in PBS

Storage

This antibody can be stored at 2°C-8°C for one month without detectable loss of activity. Antibody products are stable for twelve months from date of receipt when stored at -20°C to -80°C. Preservative-Free.

Sodium azide is recommended to avoid contamination (final concentration 0.05%-0.1%). It is toxic to cells and should be disposed of properly. Avoid repeated freeze-thaw cycles.

Clonality

Polyclonal

Ig Type

Rabbit IgG

Applications

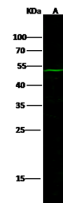
WB, IHC-P

Dilutions

WB: 5-20 µg/ml

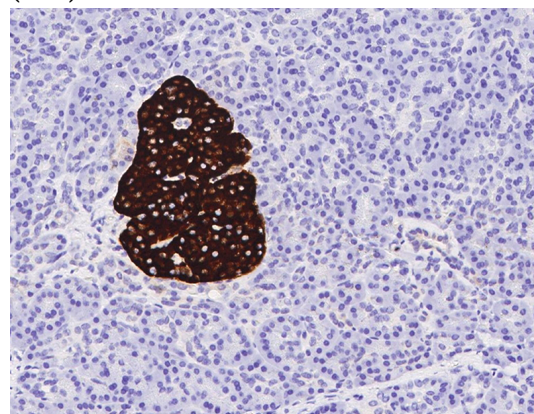
IHC-P: 0.1-1 µg/mL

Validations



Items	Lanes	A
Sample (whole cell lysate)		NIH3T3
Sample Volume (µg/lane)		30
Gel		13% SDS-PAGE reducing gel
Recommended Concentration		5-20 µg/ml
Secondary Antibody		Dylight 800-labeled Antibody To Rabbit IgG (H+L) at 1:5000 dilution.
Developed using Odyssey imaging system.		
Explanation		Predicted band size : 53 kDa Observed band size : 52 kDa

Human Carboxypeptidase E/CPE Western blot (WB) 15832



Human Carboxypeptidase E/CPE Immunohistochemistry(IHC) 15833