

Anti-PRC1 antibody



Catalog Number: 141103

Product name

Anti-PRC1 antibody

Specificity

Human PRC1

Antibody description

Rabbit Polyclonal to Human PRC1

Preparation

Produced in rabbits immunized with a synthetic peptide corresponding to the N-terminus of the Human PRC1, and purified by antigen affinity chromatography.

Formulation

0.2 µm filtered solution in PBS

Storage

This antibody can be stored at 2°C-8°C for one month without detectable loss of activity. Antibody products are stable for twelve months from date of receipt when stored at -20°C to -80°C.

Preservative-Free.

Sodium azide is recommended to avoid contamination (final concentration 0.05%-0.1%). It is toxic to cells and should be disposed of properly. Avoid repeated freeze-thaw cycles.

Clonality

Polyclonal

Ig Type

Rabbit IgG

Applications

WB, IHC-P, ICC/IF, IF

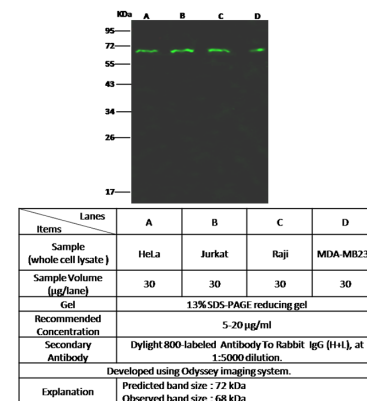
Dilutions

WB: 5-20 µg/ml

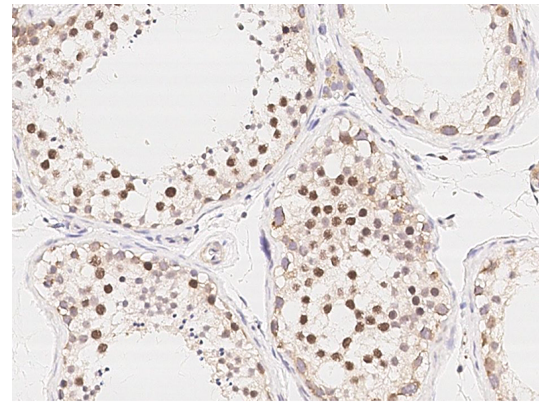
IHC-P: 0.1-2µg/mL

ICC/IF: 0.5-3µg/mL

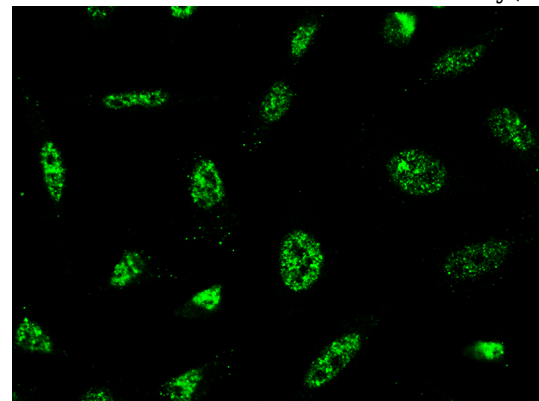
Validations



Human PRC1 Western blot (WB) 15816



Human PRC1 Immunohistochemistry(IHC) 15817



Human PRC1 Immunofluorescence(IF) 15818