

Phospho-mouse TSC2(S1365) Antibody



Catalog Number: 120718

General Information

Product name:

Phospho-mouse TSC2(S1365) Antibody

Immunogen:

Applications:

Dot Blot, ELISA

Specificity:

Mouse

Antibody description:

Peptide Affinity Purified Rabbit Polyclonal Antibody (Pab)

Properties

Preparation:

This mouse TSC2 Antibody is generated from rabbits immunized with a KLH conjugated synthetic phosphopeptide corresponding to amino acid residues surrounding S1365 of mouse TSC2.

Formulation:

Purified polyclonal antibody supplied in PBS with 0.09% (W/V) sodium azide. This antibody is purified through a protein A column, followed by two-step phosphospecific peptide affinity

purification.

Storage:

Short term 4°C, long term aliquot and store at -20°C, avoid freeze thaw cycles. Store undiluted.

Clonality:

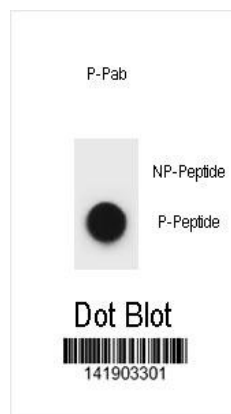
Polyclonal

Ig Type:Rabbit IgG

Applications

DB: 1:500

Validations



Dot blot analysis of mouse TSC2 Antibody (Phospho S1365) Phospho-specific Pab (Cat. #120718) on nitrocellulose membrane. 50ng of Phospho-peptide or Non Phospho-peptide per dot were adsorbed. Antibody working concentrations are 0.6ug per ml.