

VPS16 antibody



Catalog Number: 116773

Product name

VPS16 antibody

IP: 1:200-1:2000

IHC: 1:20-1:200

Specificity

Human, Mouse, Rat; other species not tested.

Antibody description

VPS16 Rabbit Polyclonal antibody. Positive IHC detected in human liver tissue. Positive WB detected in HepG2 cells, HeLa cells. Positive IP detected in HeLa cells. Observed molecular weight by Western-blot: 95kd

Preparation

This antibody was obtained by immunization of VPS16 recombinant protein (Accession Number: BC073959). Purification method: Antigen affinity purified.

Formulation

PBS with 0.02% sodium azide and 50% glycerol pH 7.3.

Storage

Store at -20°C. DO NOT ALIQUOT

Clonality

Polyclonal

Ig Type

Rabbit IgG

Applications

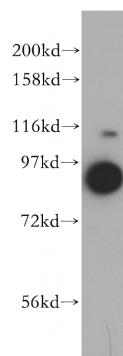
ELISA, WB, IHC, IP

Dilutions

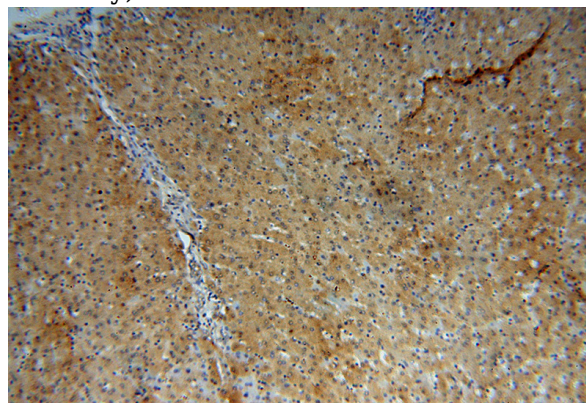
Recommended Dilution:

WB: 1:500-1:5000

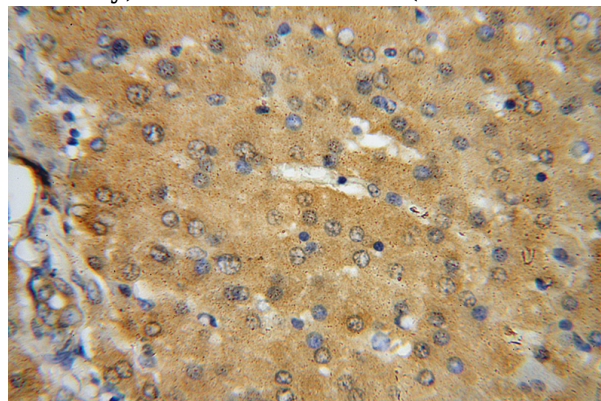
Validations



HepG2 cells were subjected to SDS PAGE followed by western blot with Catalog No:116773(VPS16 antibody) at dilution of 1:500



Immunohistochemical of paraffin-embedded human liver using Catalog No:116773(VPS16 antibody) at dilution of 1:100 (under 10x lens)

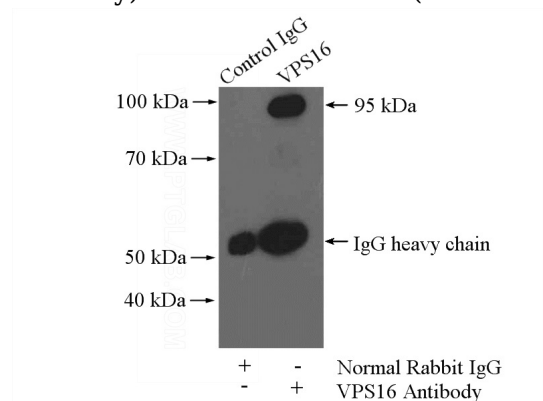


Immunohistochemical of paraffin-embedded human liver using Catalog No:116773(VPS16 antibody) at dilution of 1:100 (under 10x lens)

VPS16 antibody

Catalog Number: 116773

antibody) at dilution of 1:100 (under 40x lens)



IP Result of anti-VPS16 (IP:Catalog No:116773, 3ug; Detection:Catalog No:116773 1:500) with HeLa cells lysate 2480ug.