

# VPRBP antibody



Catalog Number: 116768

## Product name

WB: 1:500-1:5000

VPRBP antibody

IP: 1:500-1:5000

## Specificity

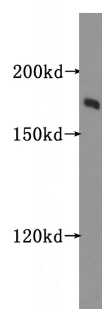
IHC: 1:20-1:200

Human, Mouse, Rat; other species not tested.

## Validations

## Antibody description

VPRBP Rabbit Polyclonal antibody. Positive IHC detected in human prostate cancer tissue. Positive FC detected in HeLa cells. Positive WB detected in HeLa cells, HEK-293 cells, K-562 cells, mouse testis tissue, PC-3 cells. Positive IP detected in HeLa cells. Observed molecular weight by Western-blot: 169 kDa



## Preparation

This antibody was obtained by immunization of VPRBP recombinant protein (Accession Number: BC022792). Purification method: Antigen affinity purified.

HeLa cells were subjected to SDS PAGE followed by western blot with Catalog No:116768(VPRBP antibody) at dilution of 1:500

## Formulation

PBS with 0.1% sodium azide and 50% glycerol pH 7.3.

## Storage

Store at -20°C. DO NOT ALIQUOT

## Clonality

Polyclonal

## Ig Type

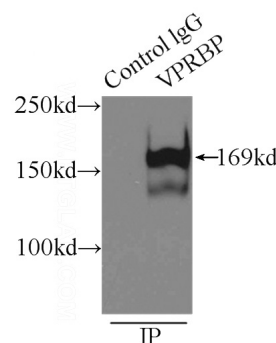
Rabbit IgG

## Applications

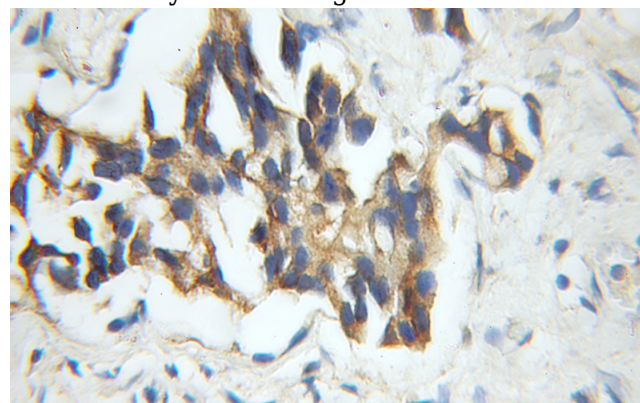
ELISA, WB, IHC, IP, FC

## Dilutions

Recommended Dilution:



IP Result of anti-VPRBP (IP:Catalog No:116768, 3ug; Detection:Catalog No:116768 1:1000) with HeLa cells lysate 3800ug.



# VPRBP antibody



Catalog Number: 116768

Immunohistochemical of paraffin-embedded human prostate cancer using Catalog No:116768(VPRBP antibody) at dilution of 1:50 (under 10x lens)

1X10<sup>6</sup> HeLa cells were stained with 0.2ug VPRBP antibody (Catalog No:116768, red) and control antibody (blue). Fixed with 4% PFA blocked with 3% BSA (30 min). Alexa Fluor 488-conjugated AffiniPure Goat Anti-Rabbit IgG(H+L) with dilution 1:1000.

